

Ordering Code: **MB-11A-X-Y-Z**

Turn screw clockwise to reduce setting and release load.

Control Option: Maximum extension from locating shoulder. (Z=L Control shown)

4.0 Hex.

14.0 Hex. Torque 6-7 Nm

Ø 19

22.22 Hex. (7/8 inch)

64

Pilot ③

M20x1.5

Valve ②

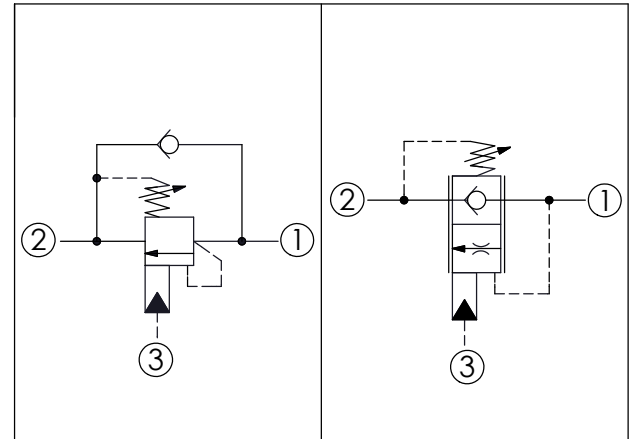
Load ①

35.05 (Ref.)

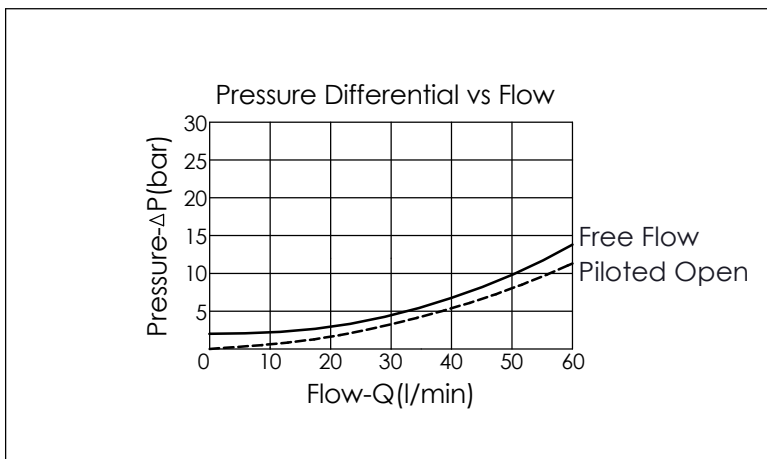
Locating Shoulder

Working Parts Clearance

UNIT:mm



TECHNICAL DATA		
Max. Setting:	350	bar
Rated flow:	60	l/min
Cavity-Tooling:	11A-3	
Installation torque:	40-50	Nm
Weight:	0.20	kg
Pressure Setting: Setting should be 1.3 times maximum load induced pressure. (We suggest when the Max. setting pressure is 350 bar, the load pressure has to be lower than 270 bar.)		
This valve is functionally a 3 ports counterbalance valve (CB). It seats as a poppet valve and modulates as a spool valve.		



X	PILOT RATIO (with sealed pilot)	
3C	3 : 1	
3D	4.5 : 1	

Y	SPRINGS	
	ADJUSTMENT RANGES (1.7 bar Cracking Pressure)	
H	70-280 bar	(210 bar Standard Setting)
J	140-350 bar	(210 bar Standard Setting)
I	25-105 bar	(70 bar Standard Setting)

Z	OPTIONS	
L	Leakproof hex. socket screw.	
LP	Leakproof hex. socket screw. With stainless steel external metal components	
C	Stainless Steel Tamper Resistant Cover.	