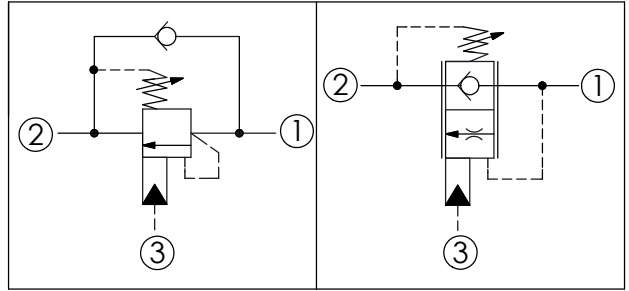
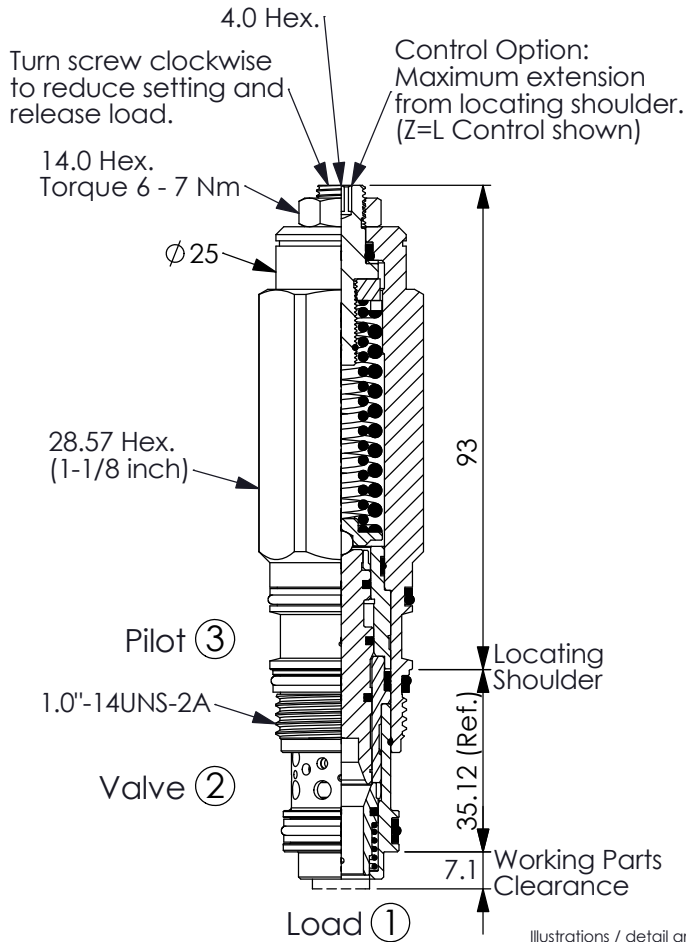


Ordering Code: **MB-2A-X-Y-Z**



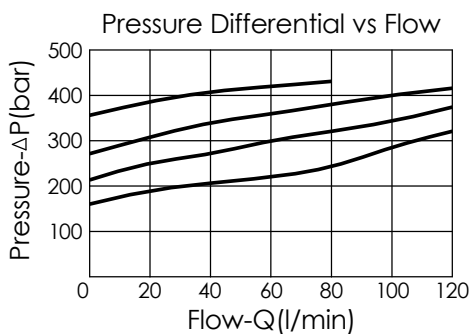
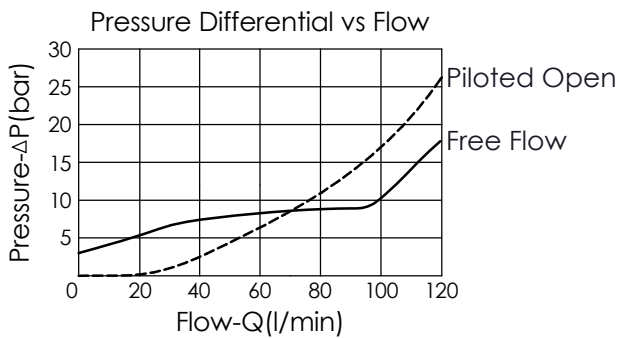
### TECHNICAL DATA

Max. Setting:	420	bar
Rated flow:	120	l/min
Cavity-Tooling:	2A-3	
Installation torque:	60 - 70	Nm
Weight:	0.46	kg

**Pressure Setting:**  
Setting should be 1.3 times maximum load induced pressure. (We suggest when the Max. setting pressure is 420 bar, the load pressure has to be lower than 320 bar.)

This valve is functionally a 3 ports counterbalance valve (CB). It seats as a poppet valve and modulates as a spool valve.

X	PILOT RATIO (with sealed pilot)	
3A	1.5 : 1	
3C	3 : 1	
3D	4.5 : 1	



Y	SPRINGS	
ADJUSTMENT RANGES (1.7 bar Cracking Pressure)		
H	70 - 280 bar (210 bar Standard Setting)	
J	140 - 350 bar (210 bar Standard Setting)	
*F	140 - 420 bar Max. Setting (350 bar Standard Setting) (Specified factory setting pressure range must be 350 - 420 bar)	
I	25 - 105 bar (70 bar Standard Setting)	

\* Any technical questions, please feel free to consult with our sales dept.

Z	OPTIONS	
L	Leakproof hex. socket screw.	
LP	Leakproof hex. socket screw. With stainless steel external metal components	
C	Stainless Steel Tamper Resistant Cover.	