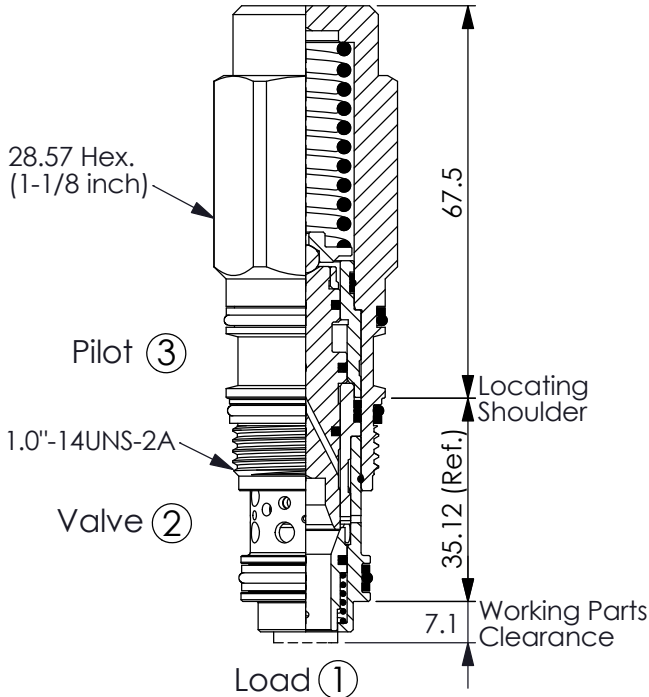
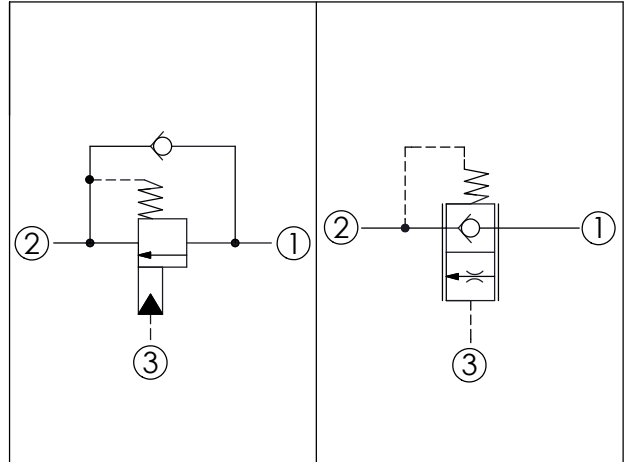


Ordering Code: **MB-2A-X-Y-Z**



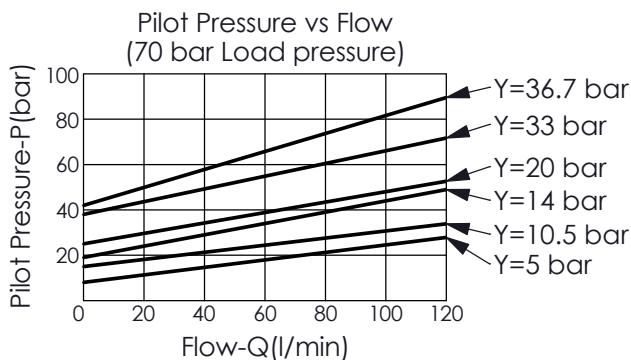
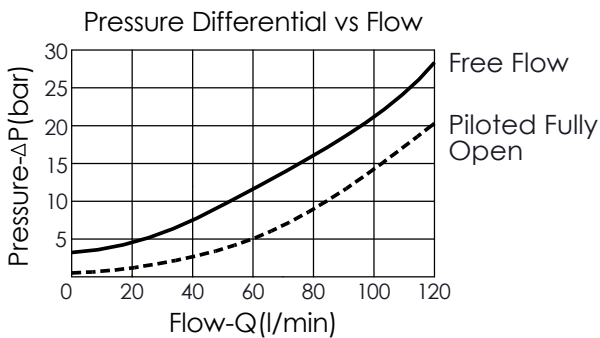
UNIT:mm



TECHNICAL DATA

Max. Operating pressure:	350	bar
Rated flow:	120	l/min
Cavity-Tooling:	2A-3	
Installation torque:	60-70	Nm
Weight:	0.35	kg

This valve is a physical replacement for a counterbalance valve but probably won't work well in a cross-piloted cylinder application. A low pilot ratio is needed for machine stability and a balanced load control has an infinitely high pilot ratio.



• Maximum valve leakage at reset $Y =$
 0200, 0330, 0367 ranges: 0.4 cc/min. at 14 bar below cracking pressure;
 0050, 0105, 0140 ranges: 50 cc/min. at 3.5 bar below cracking pressure.

X OPERATION

3N with seal pilot
Balanced

Y SPRINGS

MINIMUM PILOT SPRING PRESSURE
(Refer to Performance Chart)

※0050	5 bar
※0105	10.5 bar
※0140	14 bar
0200	20 bar
0330	33 bar
0367	36.7 bar

※ If the valve will be used at low pressure and low leakage, please contact us.

Z OPTIONS

N Not Adjustable