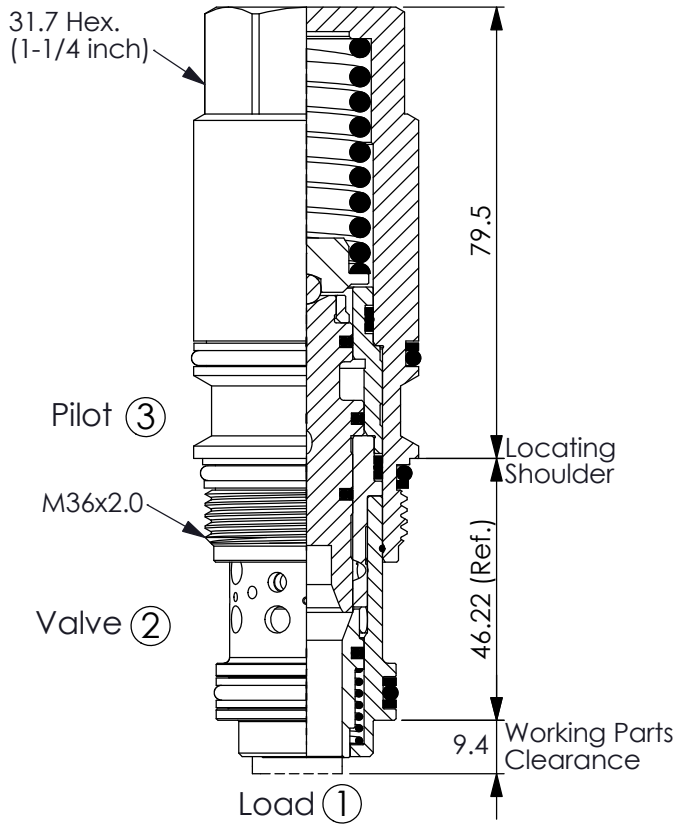
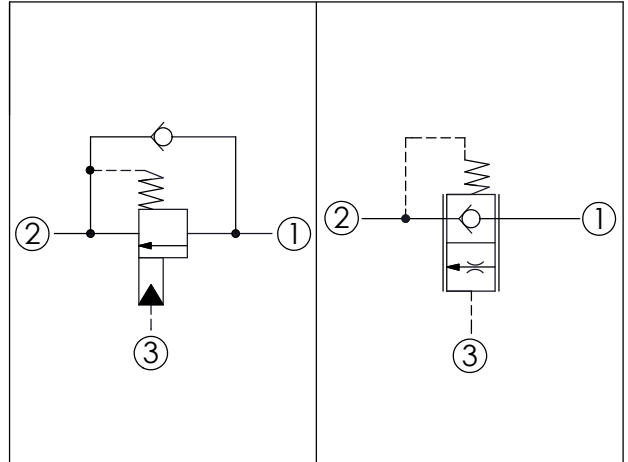


Ordering Code: **MB-17A-X-Y-Z**



UNIT:mm



TECHNICAL DATA

Max. Operating pressure: 350 bar

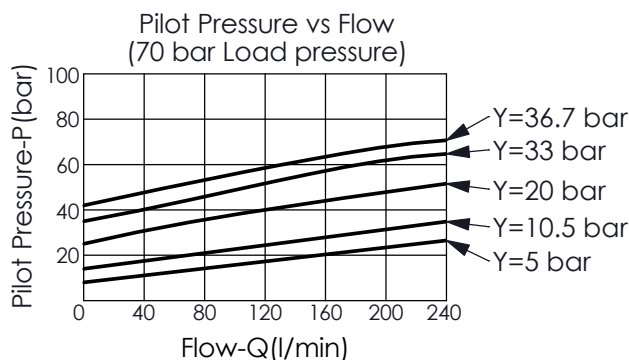
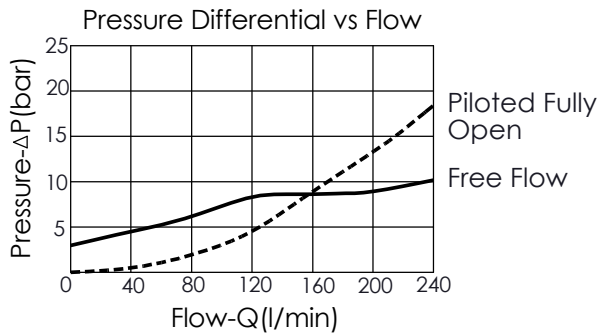
Rated flow: 240 l/min

Cavity-Tooling: 17A-3

Installation torque: 200-215 Nm

Weight: 0.78 kg

This valve is a physical replacement for a counterbalance valve but probably won't work well in a cross-piloted cylinder application. A low pilot ratio is needed for machine stability and a balanced load control has an infinitely high pilot ratio.



• Maximum valve leakage at reset Y=
0200, 0330, 0367 ranges: 0.4 cc/min. at 14 bar below cracking pressure;
0050, 0105 ranges: 50 cc/min. at 3.5 bar below cracking pressure.

X OPERATION

3N with seal pilot
Balanced

Y SPRINGS

MINIMUM PILOT SPRING PRESSURE
(Refer to Performance Chart)

※0050 5 bar

※0105 10.5 bar

0200 20 bar

0330 33 bar

0367 36.7 bar

※If the valve will be used at low pressure and low leakage, please contact us.

Z OPTIONS

N Not Adjustable