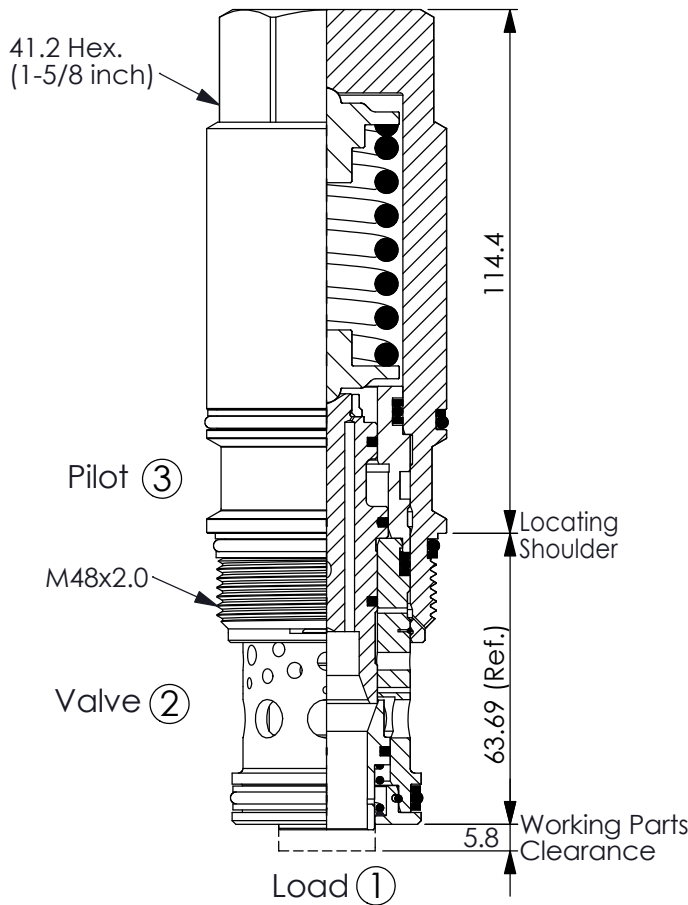
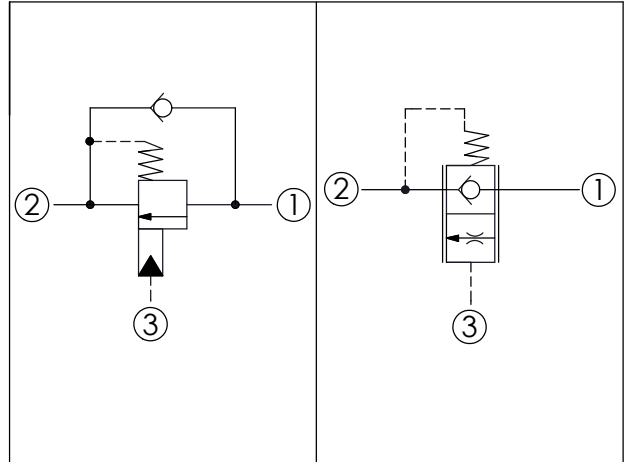


Ordering Code: **MB-19A-X-Y-Z**



UNIT:mm

Illustrations / detail are for reference only. Data subject to change.



TECHNICAL DATA

Max. Operating pressure: 350 bar

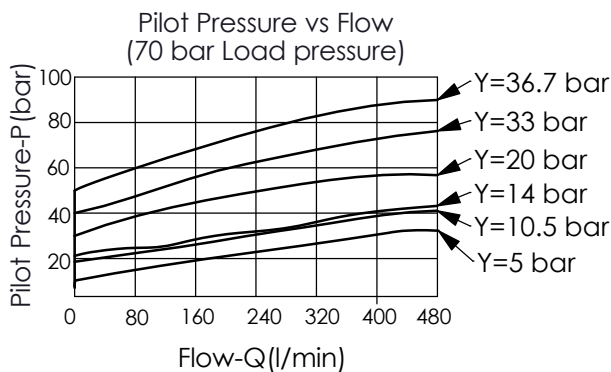
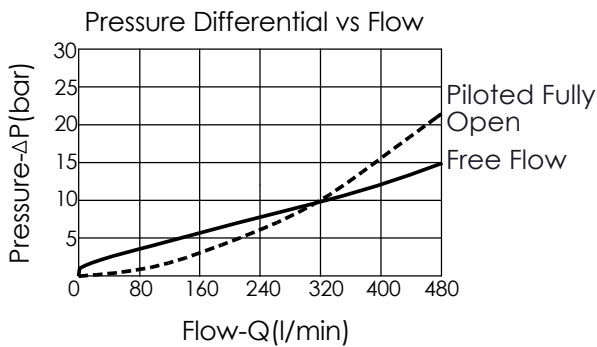
Rated flow: 480 l/min

Cavity-Tooling: 19A-3 (19AB-3)

Installation torque: 465 - 500 Nm

Weight: 1.87 kg

This valve is a physical replacement for a counterbalance valve but probably won't work well in a cross-piloted cylinder application. A low pilot ratio is needed for machine stability and a balanced load control has an infinitely high pilot ratio.



• Maximum valve leakage at reseal Y= 0200, 0330, 0367 ranges: 0.4 cc/min. at 14 bar below cracking pressure; 0050, 0105, 0140 ranges: 50 cc/min. at 3.5 bar below cracking pressure.

X OPERATION

3N with seal pilot
Balanced

Y SPRINGS

MINIMUM PILOT SPRING PRESSURE
(Refer to Performance Chart)

0050 5 bar (PILOT RANGES 10 - 30 bar)

0105 10.5 bar

0140 14 bar

0200 20 bar

0330 33 bar

0367 36.7 bar

*If the valve will be used at low pressure and low leakage, please contact us.

Z OPTIONS

N Not Adjustable