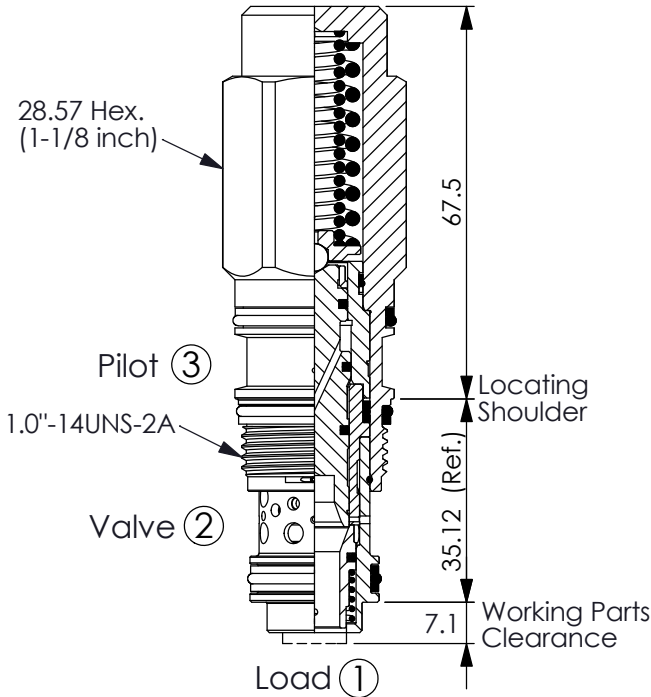
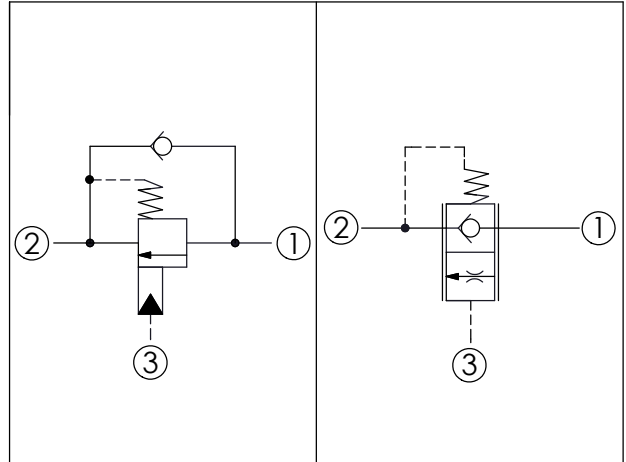


Ordering Code: **MB-2A-X-Y-Z**



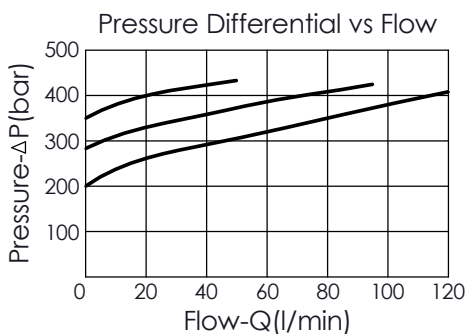
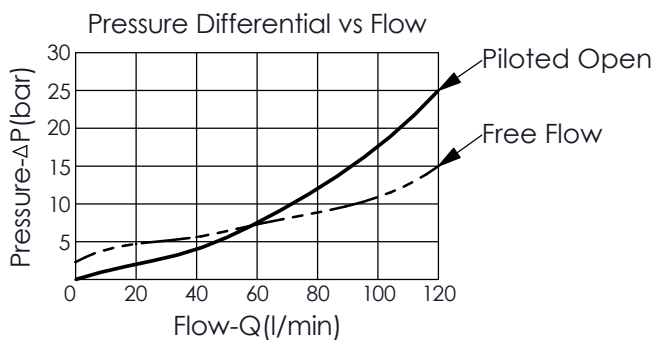
UNIT:mm



TECHNICAL DATA

Max. Operating pressure:	350 bar	
Rated flow:	120	l/min
Cavity-Tooling:	2A-3	
Installation torque:	60-70	Nm
Weight:	0.353	kg

This valve is functionally a 3 ports counterbalance valve (CB). It seats as a poppet valve and modulates as a spool valve.



X PILOT RATIO

3A 1.5 : 1 (with sealed pilot)

Y SPRINGS

ADJUSTMENT RANGES
(1.7 bar Cracking Pressure)

310 290 - 330 bar

Z OPTIONS

N Not Adjustable