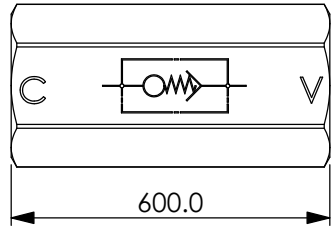


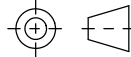
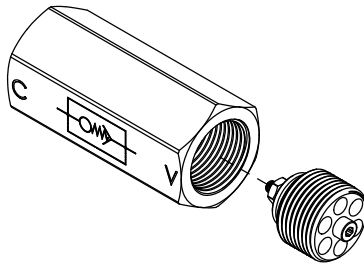
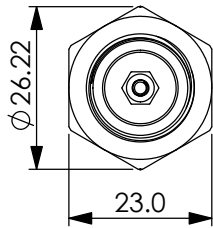
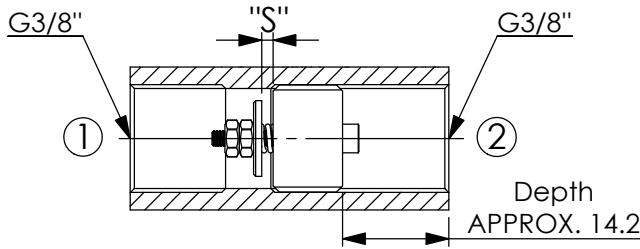
HOSE BURST PROTECTION VALVE INSERT-TYPE WITH FEMALE-FEMALE SLEEVE

Ordering Code: **MEG03BG03B-HBZ**



Direct Connecting to Cylinder

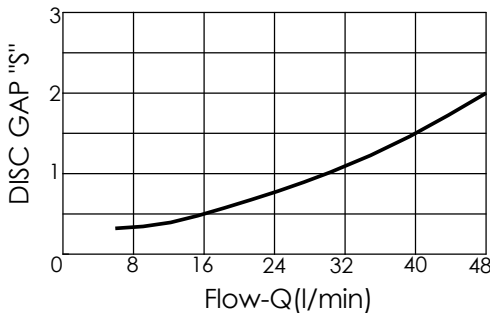
Connecting to Valve



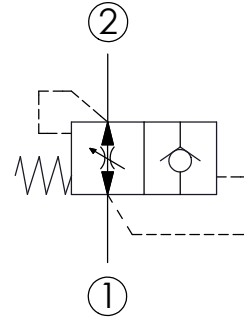
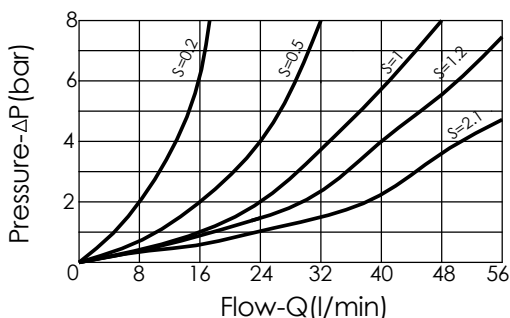
Illustrations / detail are for reference only. Data subject to change.

UNIT:mm

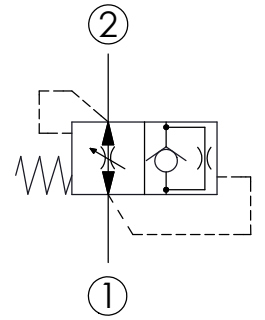
Performance curves R/flow (allowance can be $\pm 10\%$ from the curve)
After assembling the valves are preadjusted at the following valves
"S"= 2.0 mm



Flow performance from ② to ① depending on S-length



Hose burst check valve



Hose burst valve with orifice

TECHNICAL DATA

Max. pressure: 350 bar

Filtration: 25 μ m nominal or better

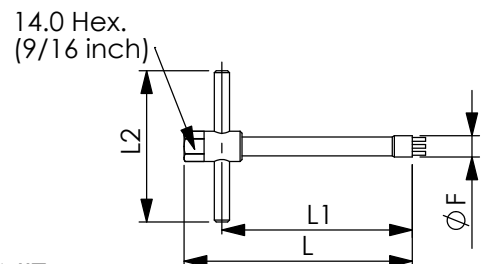
Hydraulic Fluid Viscosity · Cleanliness · Temperature Level:
Please refer WINNER technical information.
(T.101.101.E HYDRAULIC FLUID (A) VISCOSITY)
(T.101.102.E HYDRAULIC FLUID (B) CLEANLINESS)
(T.101.103.E HYDRAULIC FLUID (C) TEMPERATURE)

Weight	Flow		TIGHTENING TORQUE Cartridge Nm
	min	max	
kg	6	50	3 \pm 1

Z	ORIFICE DIAMETER (mm)			
00	no orifice	10	1.0	
05	0.5	12	1.2	
06	0.6	13	1.3	
07	0.7	15	1.5	
08	0.8	19	1.9	
09	0.9	20	2.0	

Available on request: orifice in the washer, ensuring a slow descent of the load with valve in closed position.
Orifice diameter has to be specified when ordering.

FITTING TOOL DIMENSION



UNIT:mm

F	L	L1	L2	Tool's ordering code
15	120	108	80	HBG03-T