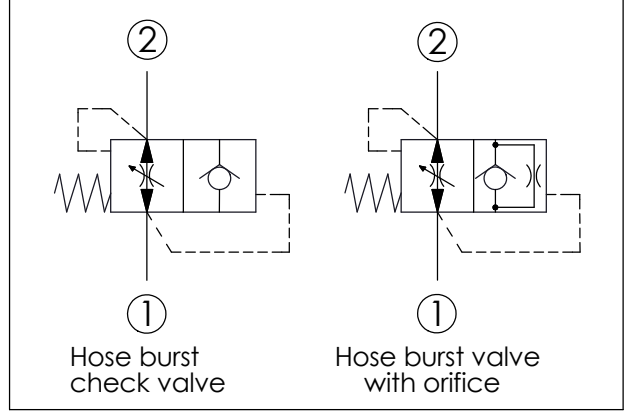
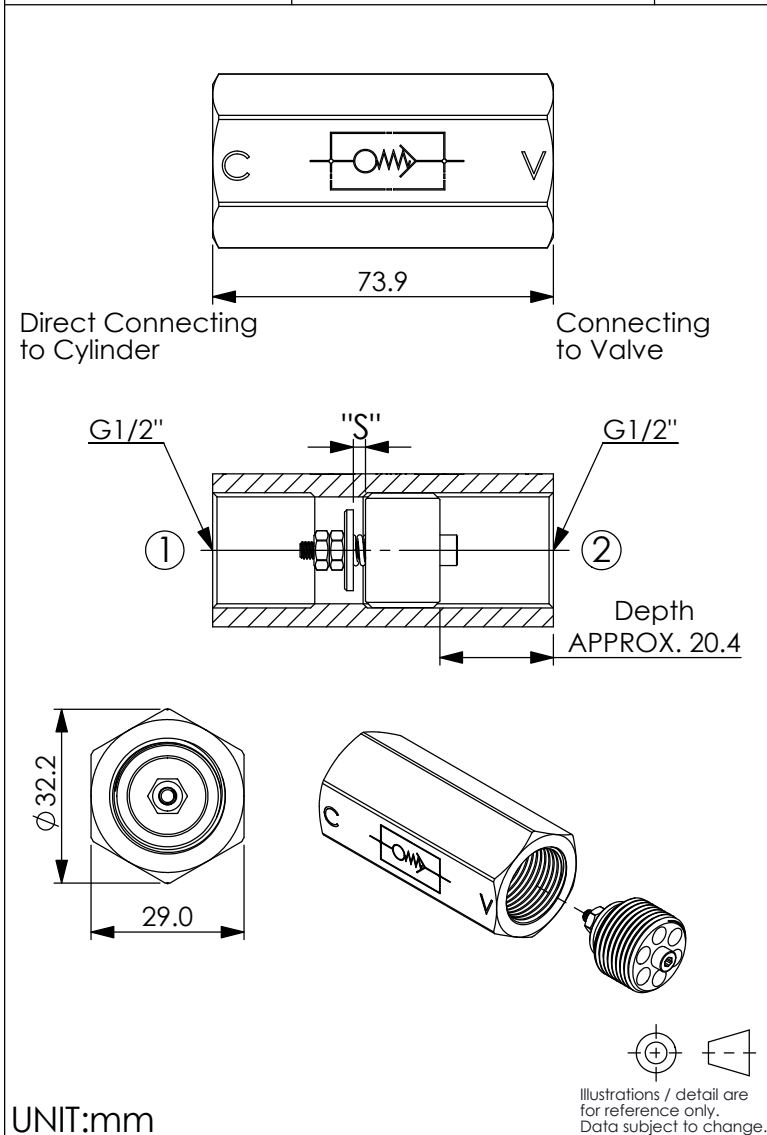


HOSE BURST PROTECTION VALVE INSERT-TYPE WITH FEMALE-FEMALE SLEEVE

Ordering Code: **MEG04BG04B-HBZ**



TECHNICAL DATA

Max. pressure: 350 bar

Filtration: 25 µm nominal or better

Hydraulic Fluid Viscosity · Cleanliness · Temperature Level:
Please refer WINNER technical information.
(T.101.101.E HYDRAULIC FLUID (A) VISCOSITY)
(T.101.102.E HYDRAULIC FLUID (B) CLEANLINESS)
(T.101.103.E HYDRAULIC FLUID (C) TEMPERATURE)

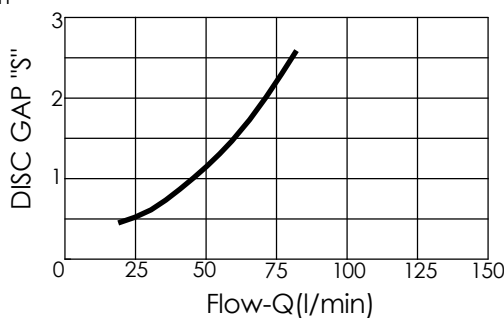
Weight	Flow		TIGHTENING TORQUE Cartridge
	min	max	
kg			Nm
0.241	16	80	3±1

Z ORIFICE DIAMETER (mm)

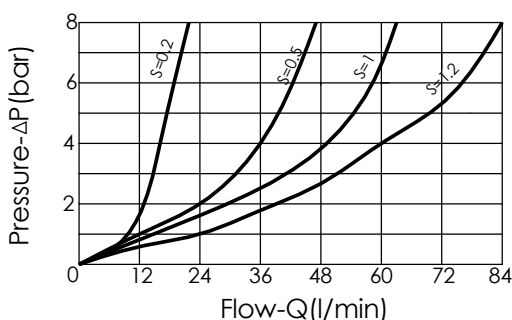
Z	ORIFICE DIAMETER (mm)
00	no orifice
05	0.5
06	0.6
07	0.7
08	0.8
09	0.9
10	1.0
12	1.2
13	1.3
15	1.5
19	1.9
20	2.0

Available on request: orifice in the washer, ensuring a slow descent of the load with valve in closed position.
Orifice diameter has to be specified when ordering.

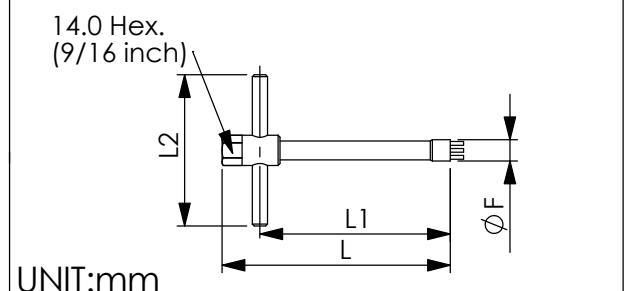
Performance curves R/flow (allowance can be ±10% from the curve)
After assembling the valves are preadjusted at the following valves
"S" = 2.5 mm



Flow performance from ② to ① depending on S-length



FITTING TOOL DIMENSION



F	L	L1	L2	Tool's ordering code
18.8	120	108	80	HBG04-T