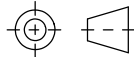
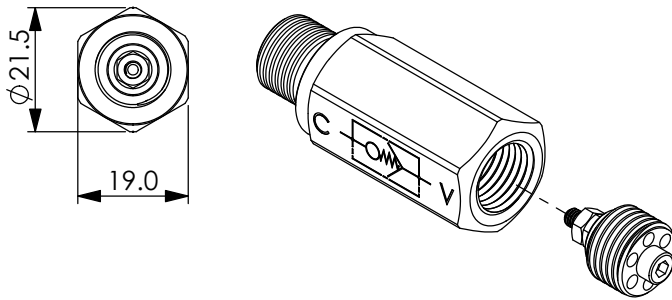
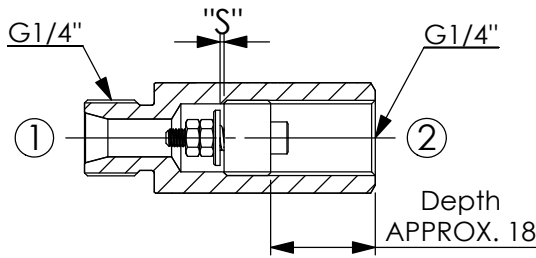
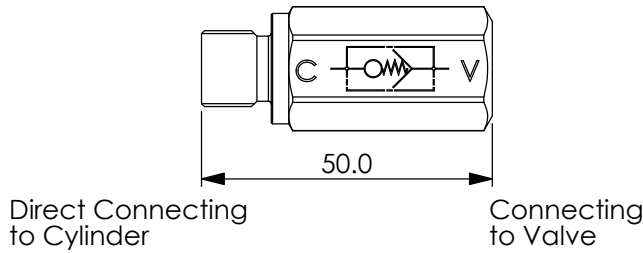


## HOSE BURST PROTECTION VALVE INSERT-TYPE WITH MALE-FEMALE SLEEVE

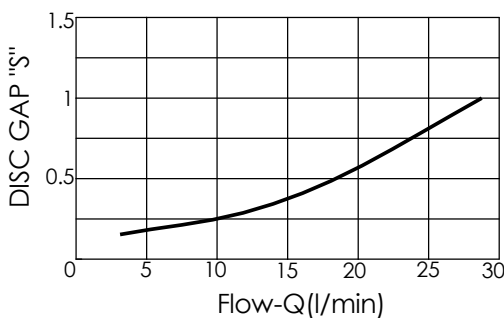
Ordering Code: **MEG02BG02A-HBZ**



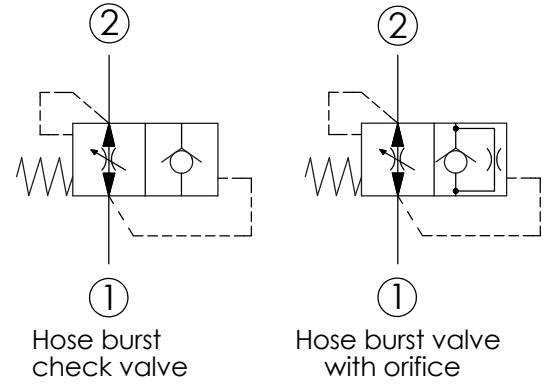
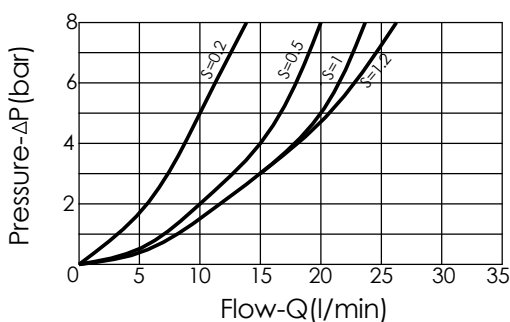
Illustrations / detail are for reference only. Data subject to change.

UNIT:mm

Performance curves R/flow (allowance can be ±10% from the curve)  
After assembling the valves are preadjusted at the following valves  
"S"= 0.7 mm



Flow performance from ② to ① depending on S-length



### TECHNICAL DATA

Max. pressure: 350 bar

Filtration: 25 µm nominal or better

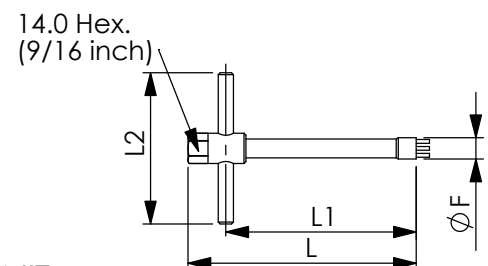
Hydraulic Fluid Viscosity · Cleanliness · Temperature Level:  
Please refer WINNER technical information.  
( T.101.101.E HYDRAULIC FLUID (A) VISCOSITY )  
( T.101.102.E HYDRAULIC FLUID (B) CLEANLINESS )  
( T.101.103.E HYDRAULIC FLUID (C) TEMPERATURE )

Weight	Flow		TIGHTENING TORQUE Cartridge Nm
	kg	min max	
0.072	4	25	2±1

Z	ORIFICE DIAMETER (mm)			
00	no orifice	10	1.0	
03	0.3	12	1.2	
05	0.5	13	1.3	
06	0.6	15	1.5	
07	0.7	19	1.9	
08	0.8	20	2.0	
09	0.9			

Available on request: orifice in the washer, ensuring a slow descent of the load with valve in closed position.  
Orifice diameter has to be specified when ordering.

### FITTING TOOL DIMENSION



UNIT:mm

F	L	L1	L2	Tool's ordering code
11.3	120	110	60	HBG02-T