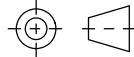
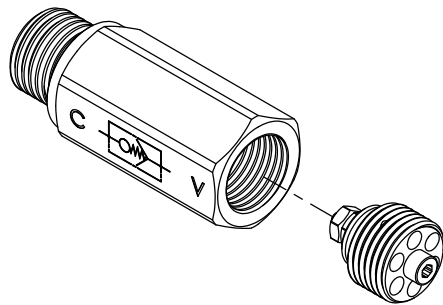
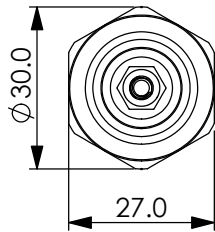
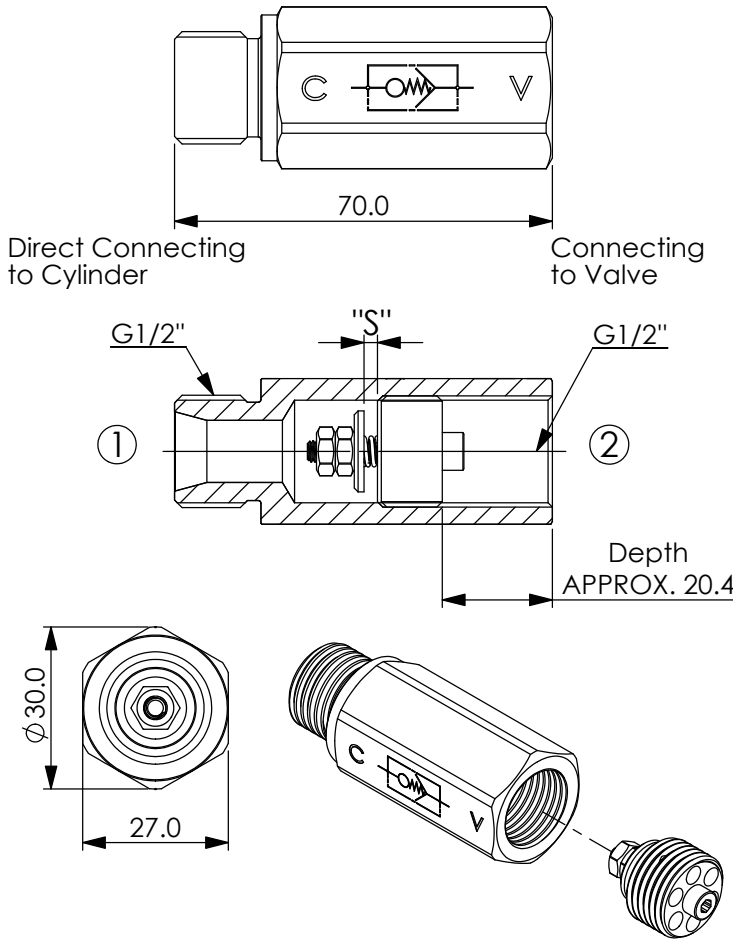


## HOSE BURST PROTECTION VALVE INSERT-TYPE WITH MALE-FEMALE SLEEVE

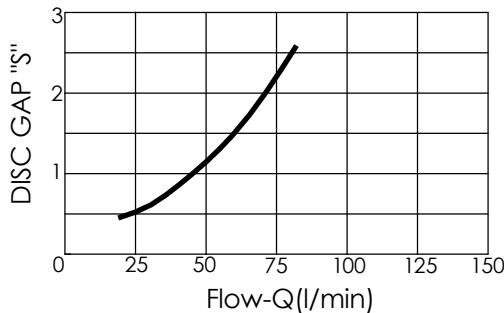
Ordering Code: **MEG04BG04A-HBZ**



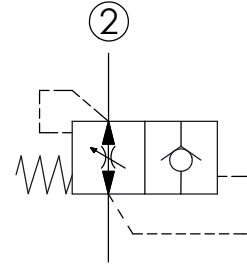
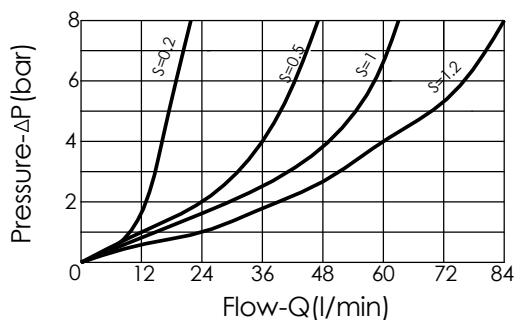
Illustrations / detail are for reference only. Data subject to change.

UNIT:mm

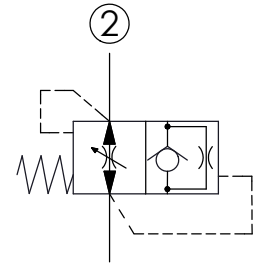
Performance curves R/flow (allowance can be  $\pm 10\%$  from the curve)  
After assembling the valves are preadjusted at the following valves  
"S" = 2.5 mm



Flow performance from ② to ① depending on S-length



①  
Hose burst  
check valve



①  
Hose burst valve  
with orifice

### TECHNICAL DATA

Max. pressure: 350 bar

Filtration: 25  $\mu$ m nominal or better

Hydraulic Fluid Viscosity · Cleanliness · Temperature Level:  
Please refer WINNER technical information.  
( T.101.101.E HYDRAULIC FLUID (A) VISCOSITY )  
( T.101.102.E HYDRAULIC FLUID (B) CLEANLINESS )  
( T.101.103.E HYDRAULIC FLUID (C) TEMPERATURE )

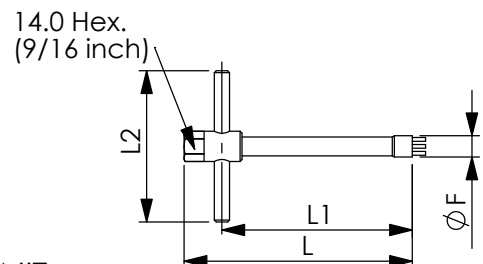
Weight kg	Flow		TIGHTENING TORQUE Cartridge Nm
	min	max	
0.187	16	80	3 $\pm$ 1

### Z ORIFICE DIAMETER (mm)

Z	ORIFICE DIAMETER (mm)
00	no orifice
05	0.5
06	0.6
07	0.7
08	0.8
09	0.9
10	1.0
12	1.2
13	1.3
15	1.5
19	1.9
20	2.0

Available on request: orifice in the washer, ensuring a slow descent of the load with valve in closed position.  
Orifice diameter has to be specified when ordering.

### FITTING TOOL DIMENSION



UNIT:mm

F	L	L1	L2	Tool's ordering code
18.8	120	108	80	HBG04-T