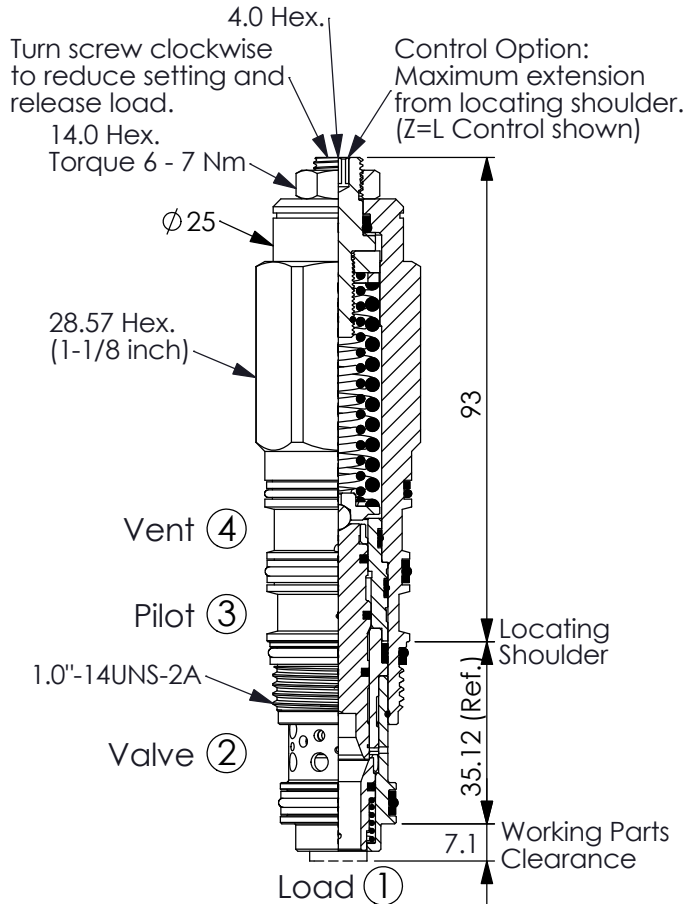
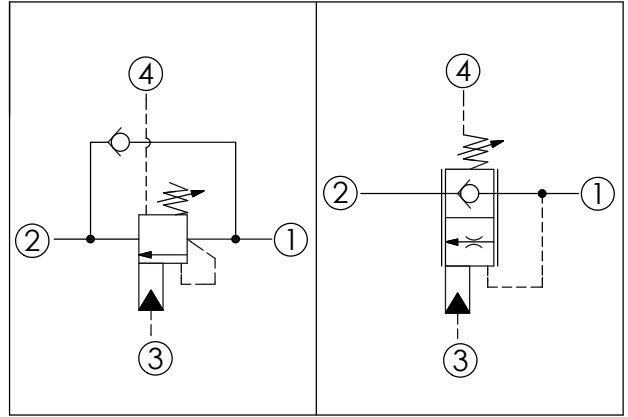
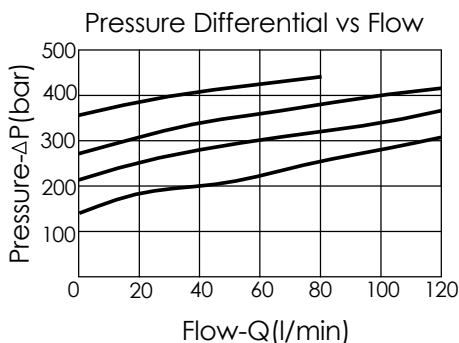
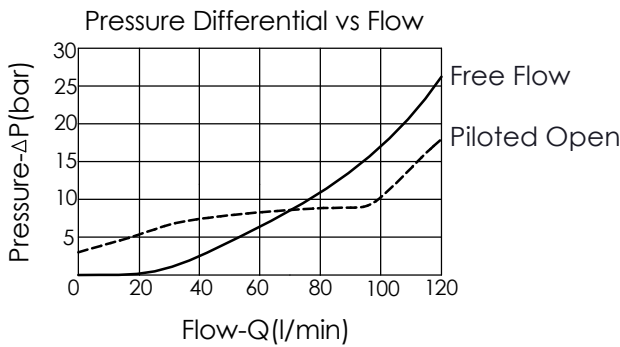


Ordering Code: **MW-22A-X-Y-Z**



UNIT:mm

Illustrations / detail are for reference only. Data subject to change.



TECHNICAL DATA

Max. Setting:	350	bar
Rated flow:	120	l/min
Cavity-Tooling:	22A-4	
Installation torque:	60 - 70	Nm
Weight:	0.43	kg

Pressure Setting:

Setting should be 1.3 times maximum load induced pressure.
(We suggest when the Max. setting pressure is 350 bar, the load pressure has to be lower than 260 bar.)

This valve is functionally a 4 ports counterbalance valve. It seats as a poppet valve and modulates as a spool valve offering the best of both worlds.

X	PILOT RATIO (with sealed pilot)	
4A	1.5 : 1	
4C	3 : 1	
4D	4.5 : 1	

SPRINGS	
Y	ADJUSTMENT RANGES (1.7 bar Cracking Pressure)
H	70 - 280 bar (210 bar Standard Setting)
J	140 - 350 bar (210 bar Standard Setting)
* F	140 - 420 bar Max. Setting (350 bar Standard Setting) (Specified factory setting pressure range must be 350 - 420 bar)

* Any technical questions, please feel free to consult with our sales dept.

OPTIONS	
L	Leakproof hex. socket screw.