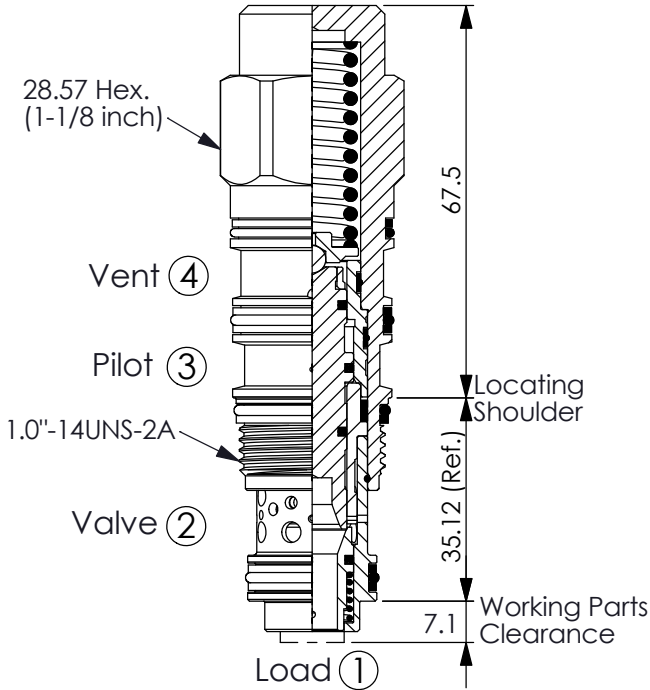
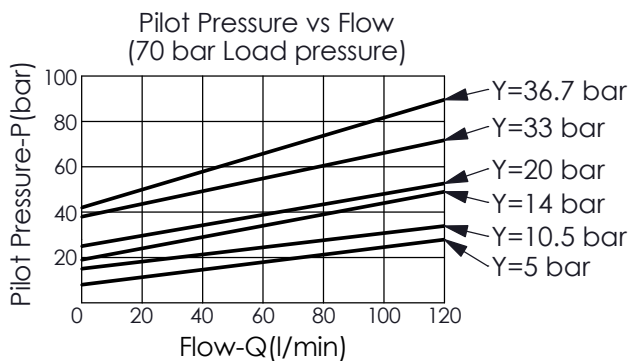
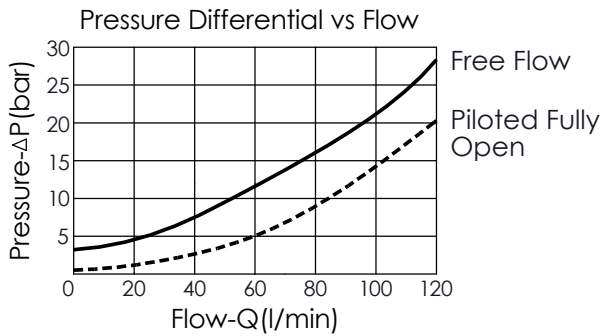


Ordering Code: **MW-22A-X-Y-Z**



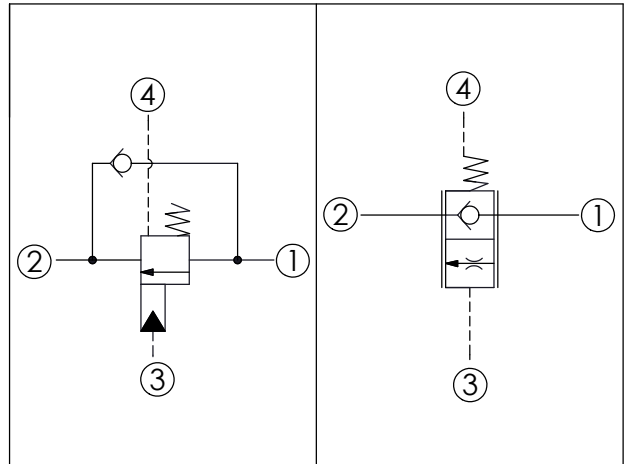
UNIT:mm



• Maximum valve leakage at reset Y=

0200, 0330, 0367 ranges: 0.4 cc/min. at 14 bar below cracking pressure;

0050, 0105, 0140 ranges: 50 cc/min. at 3.5 bar below cracking pressure.



### TECHNICAL DATA

Max. Operating pressure:	350	bar
Rated flow:	120	l/min
Cavity-Tooling:	22A-4	
Installation torque:	60-70	Nm
Weight:	0.33	kg

This valve is a physical replacement for a counterbalance valve but probably won't work well in a cross-piloted cylinder application. A low pilot ratio is needed for machine stability and a balanced load control has an infinitely high pilot ratio.

### X OPERATION

**4N** with seal pilot  
Balanced

### Y SPRINGS

MINIMUM PILOT SPRING PRESSURE  
(Refer to Performance Chart)

※0050	5 bar
※0105	10.5 bar
※0140	14 bar
0200	20 bar
0330	33 bar
0367	36.7 bar

※ If the valve will be used at low pressure and low leakage, please contact us.

### Z OPTIONS

**N** Not Adjustable