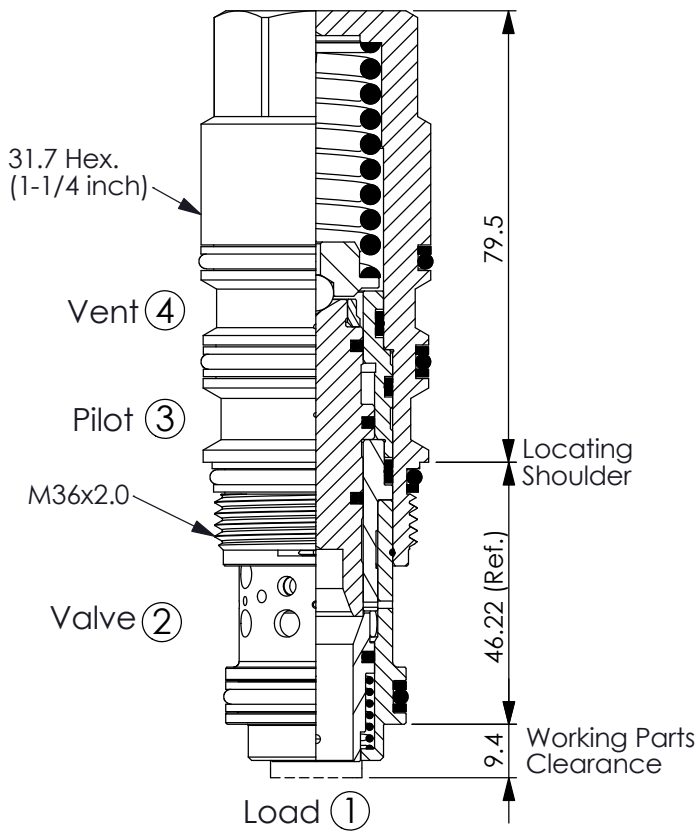
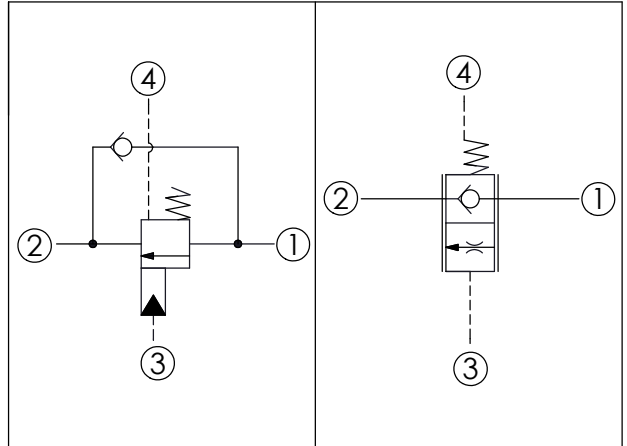


Ordering Code: **MW-23A-X-Y-Z**



UNIT:mm

Illustrations / detail are for reference only. Data subject to change.



### TECHNICAL DATA

Max. Operating pressure: 350 bar

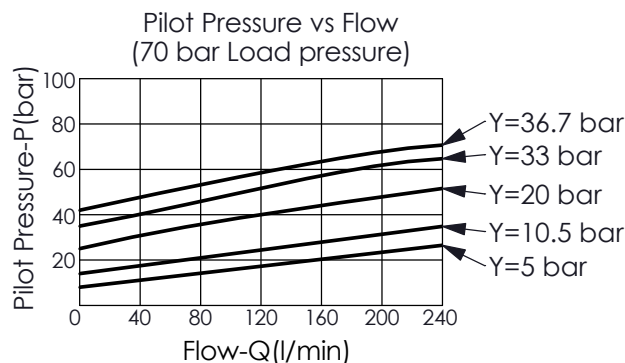
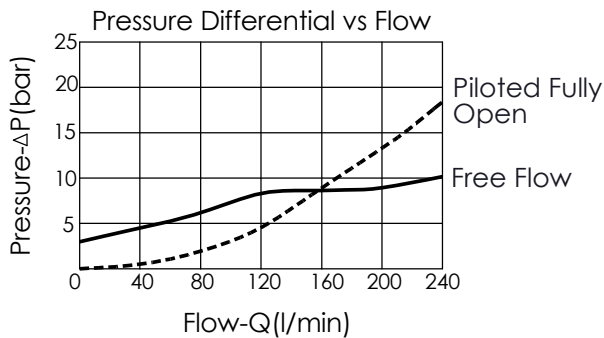
Rated flow: 240 l/min

Cavity-Tooling: 23A-4

Installation torque: 200 - 215 Nm

Weight: 0.77 kg

This valve is a physical replacement for a counterbalance valve but probably won't work well in a cross-piloted cylinder application. A low pilot ratio is needed for machine stability and a balanced load control has an infinitely high pilot ratio.



• Maximum valve leakage at resetat Y=  
0200, 0330, 0367 ranges: 0.4 cc/min. at 14 bar below cracking pressure;  
0050, 0105 ranges: 50 cc/min. at 3.5 bar below cracking pressure.

### X OPERATION

**4N** with seal pilot  
Balanced

### Y SPRINGS

MINIMUM PILOT SPRING PRESSURE  
(Refer to Performance Chart)

※**0050** 5 bar

※**0105** 10.5 bar

**0200** 20 bar

**0330** 33 bar

**0367** 36.7 bar

※If the valve will be used at low pressure and low leakage, please contact us.

### Z OPTIONS

**N** Not Adjustable