

FLOW CONTROL VALVE (Fully Adjustable Needle with Reverse Flow Check)

Ordering Code: **NC-08W-X-Y-Z**

Control Option:
Maximum extension
from locating shoulder.
(Z=L Control shown)

4.0 Hex.

3/8"-24UNF-2A

14.27 Hex. (9/16 inch)
Torque 9 - 10 Nm
Apply CH (5JAA097)
Plastic tamper
resistant cover

24.0 Hex.

3/4"-16UNF-2A

40

4.1

27.6 (Ref.)

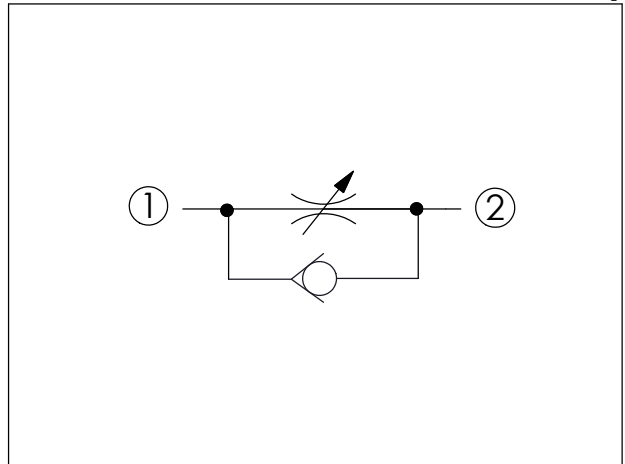
Locating
Shoulder

②

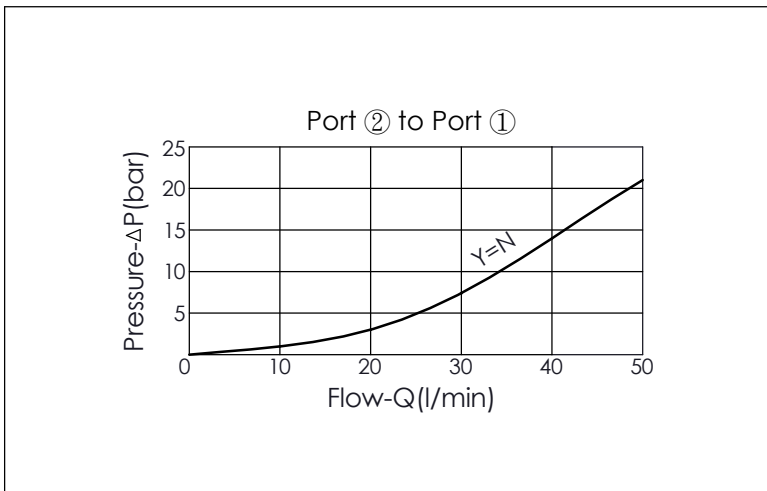
①

UNIT:mm

Illustrations / detail are
for reference only.
Data subject to change.



TECHNICAL DATA	
Max. operating pressure:	350 bar (Refer To Performance Chart)
Rated Flow:	35 l/min (Refer To Performance Chart)
Cavity-Tooling:	08W-2
Installation torque:	25 - 35 Nm
Weight:	0.119 (Z=L) kg



Y	MAXIMUM NOMINAL ORIFICE
N	ϕ 5.0 mm (Port ② to Port ①)

X	OPERATION
20	① to ② (Free Flow)

Z	OPTIONS
L	Leakproof hex. socket screw.
E	Handknob and locknut.
B	Handknob and aluminum locknut.
K	Handknob with Lock Knob. (Order Code: 6ZAK001)