

## FLOW CONTROL VALVE (Fully Adjustable Needle with Reverse Flow Check)

Ordering Code: **NC-10W-X-Y-Z**

Control Option:  
Maximum extension  
from locating shoulder.  
(Z=L Control shown)

4.0 Hex.

3/8"-24UNF-2A

14.27 Hex. (9/16 inch)  
Torque 9 - 10 Nm  
Apply CH (5JAA097)  
Plastic tamper  
resistant cover

25.4 Hex.  
(1.0 inch)

7/8"-14UNF-2A

41

32

4.0

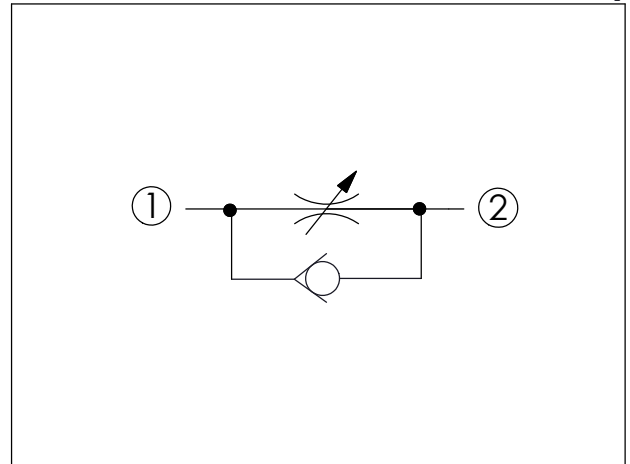
Locating  
Shoulder

②

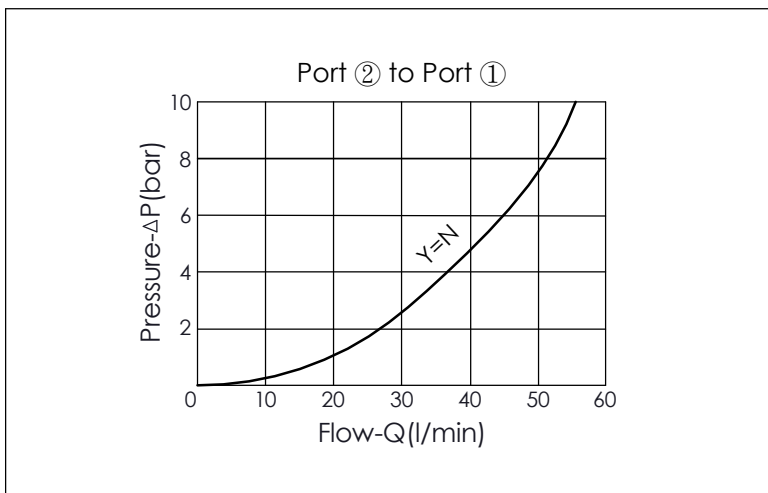
①

UNIT:mm

Illustrations / detail are  
for reference only.  
Data subject to change.




TECHNICAL DATA	
Max. operating pressure:	350 bar (Refer To Performance Chart)
Rated Flow:	45 l/min (Refer To Performance Chart)
Cavity-Tooling:	10W-2
Installation torque:	35 - 45 Nm
Weight:	0.149 (Z=L) kg



Y	MAXIMUM NOMINAL ORIFICE
N	∅ 6.5 mm (Port ② to Port ①)

X	OPERATION
20	① to ② (Free Flow)

Z	OPTIONS
L	Leakproof hex. socket screw. 
K	Handknob with Lock Knob. (Order Code: 6ZAK001) 