

FLOW CONTROL VALVE (Fully Adjustable Needle with Reverse Flow Check)

Ordering Code: **NC-12W-X-Y-Z**

Control Option:
Maximum extension
from locating shoulder.
(Z=L Control shown)

4.0 Hex.

3/8"-24UNF-2A

14.27 Hex. (9/16 inch)
Torque 9-10 Nm
Apply CH (5JAA097)
Plastic tamper
resistant cover

32.0 Hex.

1-1/16"-12UN-2A

35

2.0

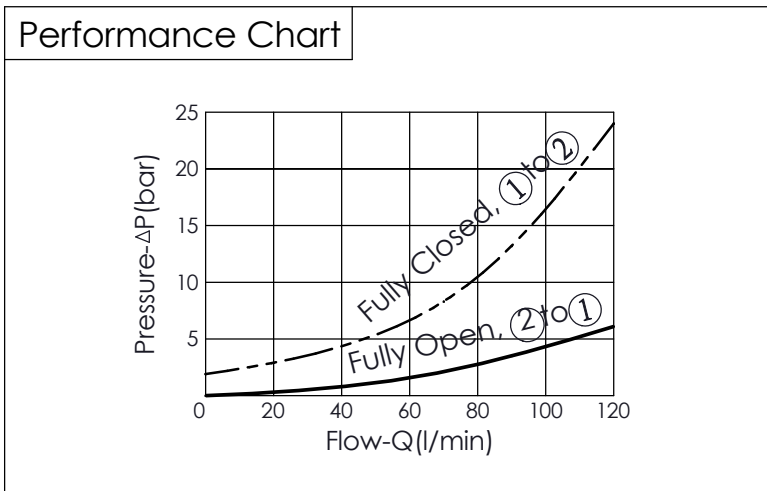
45.1

Locating
Shoulder

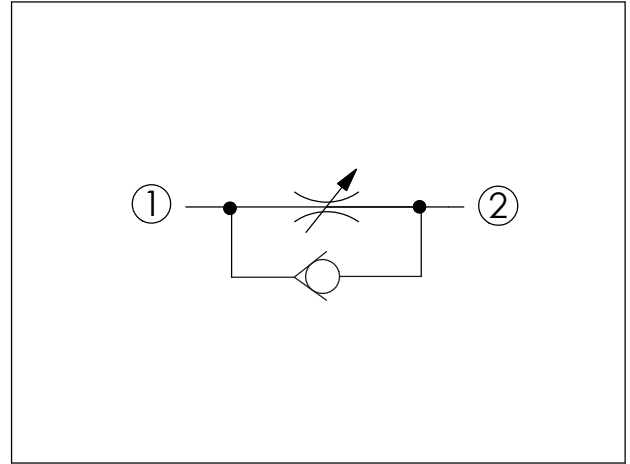
②

①

UNIT:mm

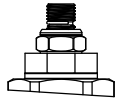
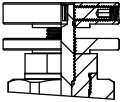
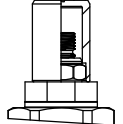
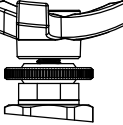


Y	MAXIMUM NOMINAL ORIFICE
N	ϕ 10.5 mm (Port ② to Port ①)



TECHNICAL DATA	
Max. operating pressure:	350 bar (Refer To Performance Chart)
Rated Flow:	120 l/min (Refer To Performance Chart)
Cavity-Tooling:	12W-2
Installation torque:	45-55 Nm
Weight:	0.217 (Z=L) kg

X	OPERATION
20	① to ② (Free Flow)

Z	OPTIONS
L	Leakproof hex. socket screw. 
B	Handknob and aluminum locknut. 
CH	Plastic Tamper Resistant Cover of General Type Hex. Nut 
T	Three-winged Handknob Kit. 
K	Handknob with Lock Knob. (Order Code: 6ZAK001) 