

Ordering Code: **NC-16W-X-Y-Z**

Control Option:
Maximum extension
from locating shoulder.
(Z=L Control shown)

4.0 Hex.

3/8"-24UNF-2A

14.27 Hex. (9/16 inch)
Torque 9-10 Nm
Apply CH (5JAA097)
Plastic tamper
resistant cover

38.0 Hex.

1-5/16"-12UN-2A

34

1.5

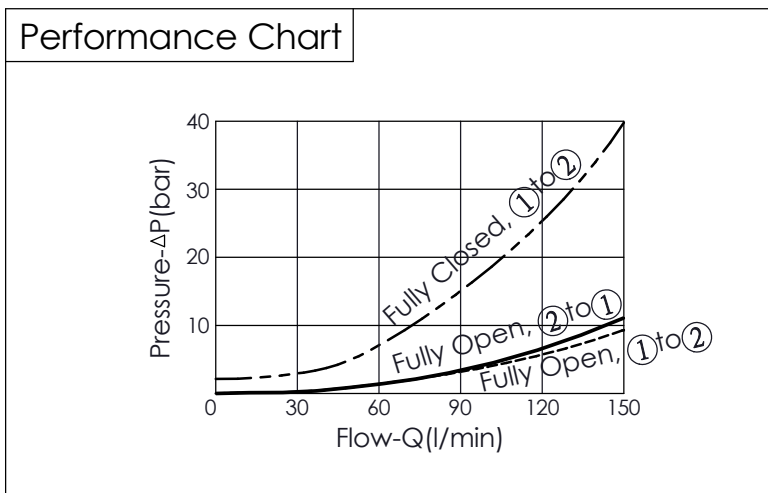
45

Locating
Shoulder

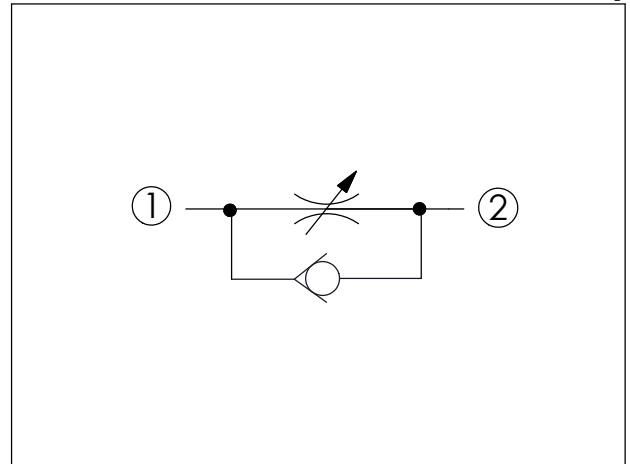
②

①

UNIT:mm



Y	MAXIMUM NOMINAL ORIFICE
N	ϕ 10.5 mm (Port ② to Port ①)



TECHNICAL DATA	
Max. operating pressure:	350 bar (Refer To Performance Chart)
Rated Flow:	150 l/min (Refer To Performance Chart)
Cavity-Tooling:	16W-2
Installation torque:	60-70 Nm
Weight:	0.305 (Z=L) kg

X	OPERATION
20	① to ② (Free Flow)

Z	OPTIONS
L	Leakproof hex. socket screw.
B	Handknob and aluminum locknut.
CH	Plastic Tamper Resistant Cover of General Type Hex. Nut
T	Three-winged Handknob Kit.
K	Handknob with Lock Knob. (Order Code: 6ZAK001)