

FLOW CONTROL VALVE (Fully Adjustable Needle with Reverse Flow Check)

Ordering Code: **NC-21E-X-Y-Z**

Control Option:
Maximum extension
from locating shoulder.
(Z=L Control shown)

4.0 Hex.
3/8"-24UNF-2A
14.27 Hex. (9/16 inch)
Torque 9-10 Nm
Apply CH (5JAA097)
Plastic tamper
resistant cover

38.0 Hex.

G 1"

②

①

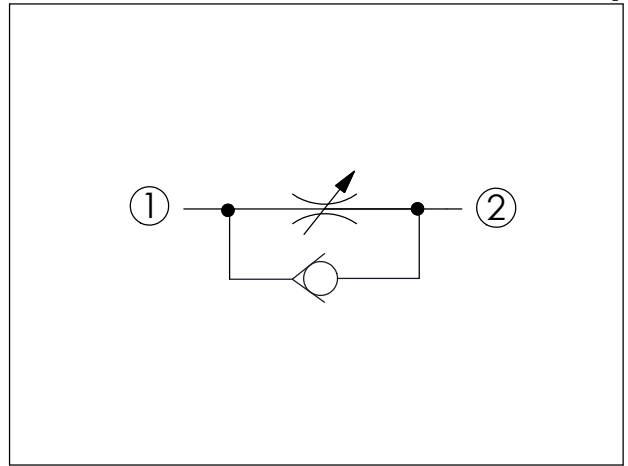
35

2.1

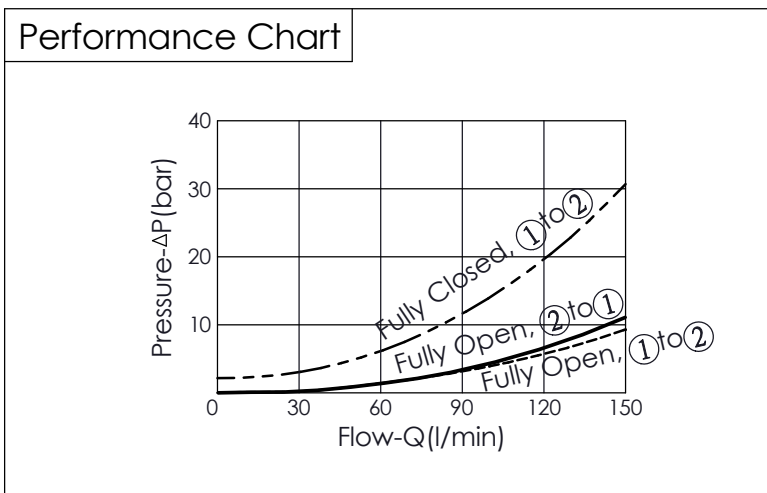
Locating
Shoulder

49

UNIT:mm



TECHNICAL DATA	
Max. operating pressure:	350 bar (Refer To Performance Chart)
Rated Flow:	150 l/min (Refer To Performance Chart)
Cavity-Tooling:	21E-2
Installation torque:	70-90 Nm
Weight:	0.333 (Z=L) kg



X	OPERATION
20	① to ② (Free Flow)

Y	MAXIMUM NOMINAL ORIFICE
N	∅ 10.5 mm (Port ② to Port ①)

Z	OPTIONS
L	Leakproof hex. socket screw.
K	Handknob with Lock Knob. (Order Code: 6ZAK001)
E	Handknob and locknut.
B	Handknob and aluminum locknut.