

Ordering Code: **NC-162A-X-Y-Z**

Control Option:
Maximum extension
from locating shoulder.
(Z=L Control shown)

4.0 Hex.

5/16"-32UNEF-2A

12.7 Hex. (1/2 inch)
Torque 9-10 Nm
Apply CH (5JAA097)
Plastic tamper
resistant cover

19.05 Hex.
(3/4 inch)

M16x1.5

Port ②

Port ①

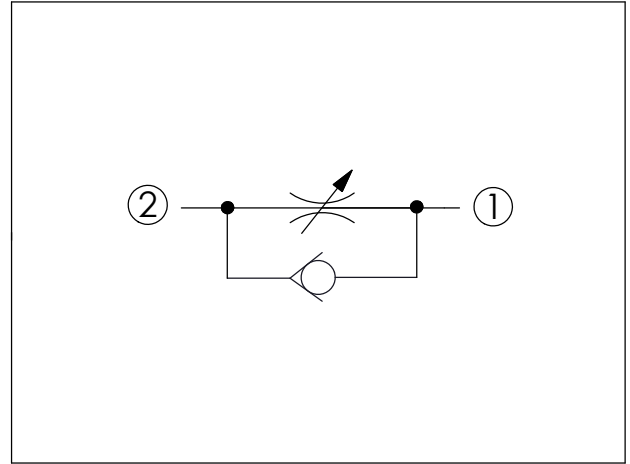
6.6

30.96 (Ref.)

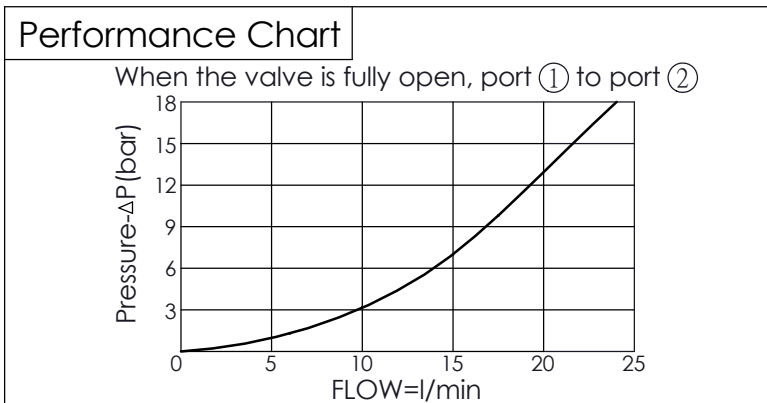
Locating
Shoulder

L=40.4
K=45

UNIT:mm

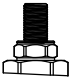



TECHNICAL DATA	
Max. operating pressure:	350 bar (Refer To Performance Chart)
Rated flow:	15 l/min (Refer To Performance Chart)
Cavity-Tooling:	162A-2
Installation torque:	27-33 Nm
Weight:	0.07 (Z=L) kg



X	OPERATION
21	② to ① (Free Flow)

Y	OPTIONS	
	Maximum Nominal Orifice (Refer To Performance Chart)	Cracking Pressure
BC	∅ 4.0 mm	2.0 bar

Z	OPTIONS
L	Leakproof hex. socket screw. 
LP	Leakproof hex. socket screw. With stainless steel external metal components 
K	Handknob with Lock Knob. (Order Code: 7ZAK001) 