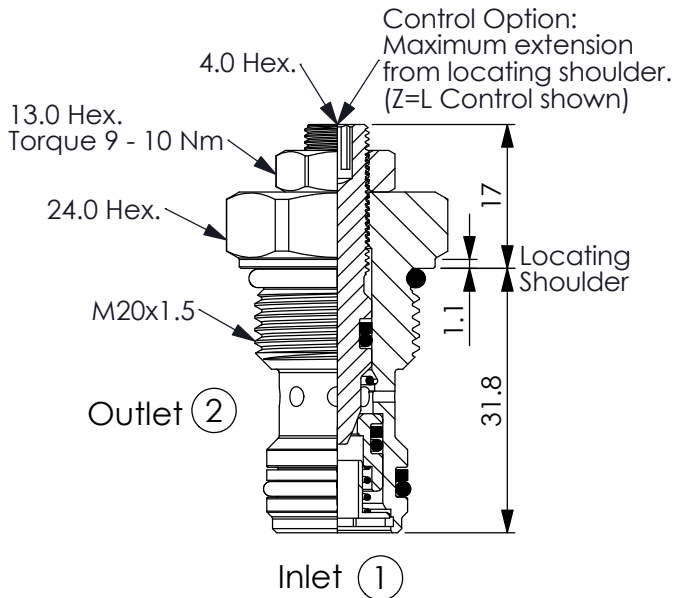
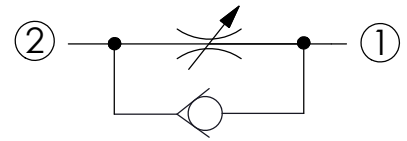


Ordering Code: **NC-20MC-X-Y-Z**



UNIT:mm

Illustrations / detail are for reference only. Data subject to change.



TECHNICAL DATA

Max. operating pressure: 350 bar
(Refer To Performance Chart)

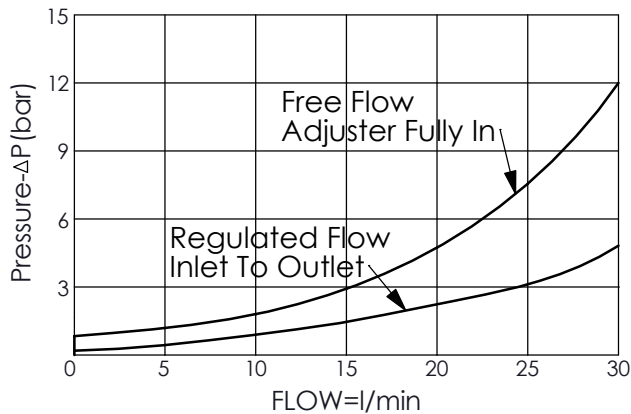
Rated flow: 30 l/min
(Refer To Performance Chart)

Cavity-Tooling: 20MC-2

Installation torque: 39 - 51 Nm

Weight: 0.08 (Z=L) kg

Performance Chart

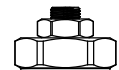


X OPERATION

21 ② to ① (Free Flow)

Z OPTIONS

L Leakproof hex. socket screw.



Y	OPTIONS	
	Maximum Nominal Orifice	Cracking Pressure
DD	∅5.2 mm	3.5 bar