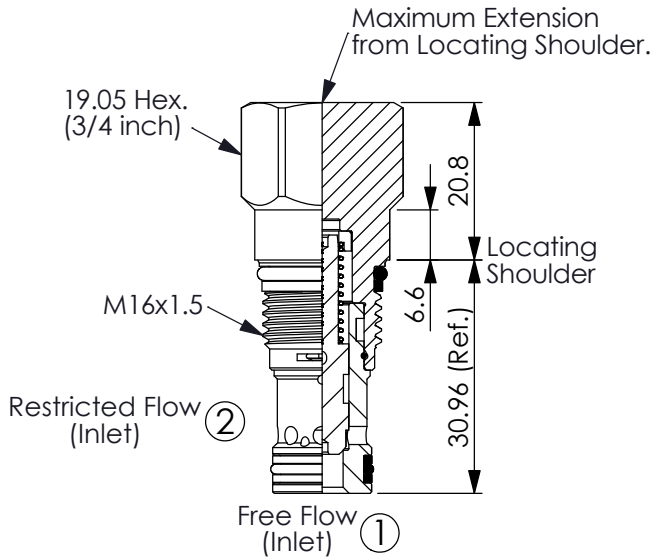
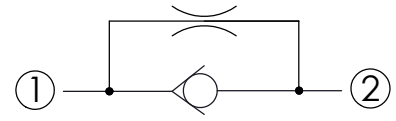


Ordering Code: **NC-162A-X-Y-N-Z**



UNIT:mm

Illustrations / detail are for reference only. Data subject to change.



TECHNICAL DATA

Max. operating pressure: 350 bar
(Refer To Performance Chart)

Rated flow: 30 l/min
(Refer To Performance Chart)

Cavity-Tooling: 162A-2

Installation torque: 27 - 33 Nm

Weight: 0.074 kg

X OPERATION

20 ① to ② (Free Flow)

Y OPTIONS

Maximum Nominal Orifice (Refer To Performance Chart)

12 ϕ 1.2 mm

05 ϕ 0.5 mm

• Orifice Range: ϕ 0.4 - ϕ 1.6 mm
(If you need special dimension of orifice, please feel free to contact us.)

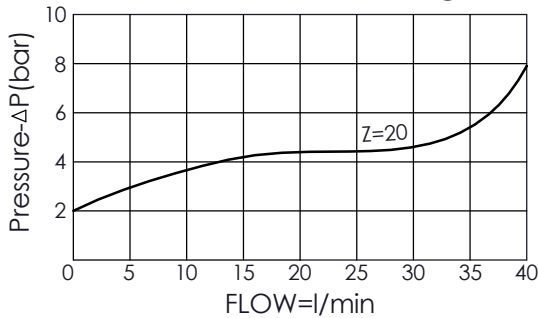
Z SPRINGS

Cracking pressure

10 1.0 bar

20 2.0 bar

When the valve is fully open, port ① to port ②



When the valve is fully closed, port ② to port ①

