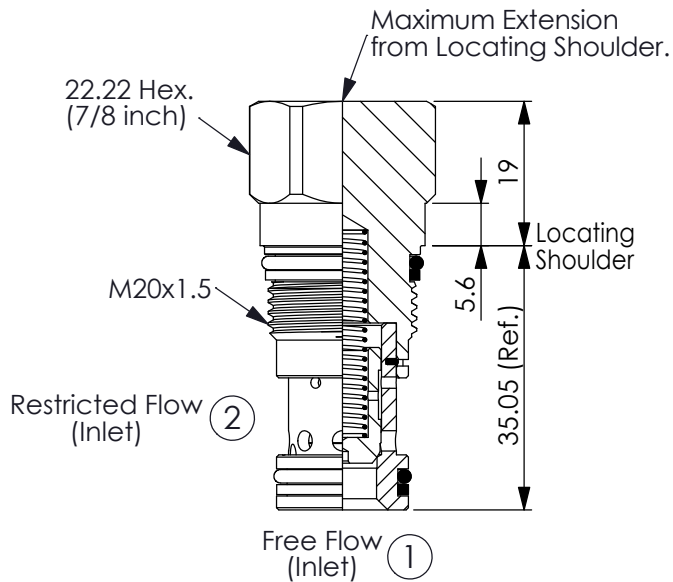


Ordering Code: **NC-13A-X-Y-N-Z**

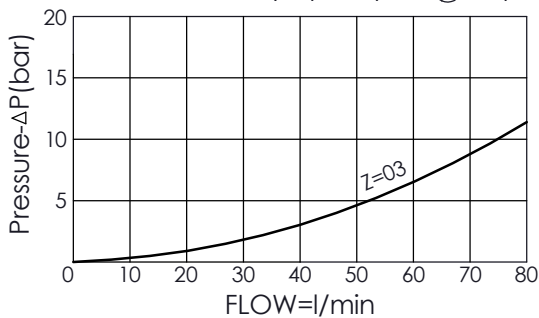


UNIT:mm

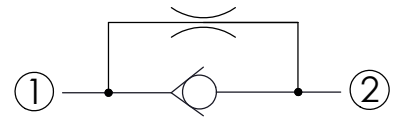
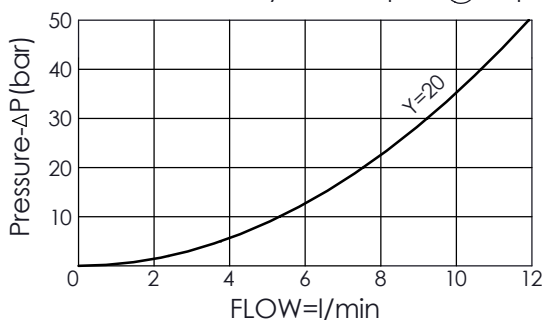
Illustrations / detail are for reference only. Data subject to change.

### Performance Chart

When the valve is fully open, port ① to port ②



When the valve is fully closed, port ② to port ①



### TECHNICAL DATA

Max. operating pressure: 350 bar  
(Refer To Performance Chart)

Rated flow: 60 l/min  
(Refer To Performance Chart)

Cavity-Tooling: 13A-2

Installation torque: 40 - 50 Nm

Weight: 0.11 kg

### X OPERATION

20 ① to ② (Free Flow)

### Y OPTIONS

Maximum Nominal Orifice (Refer To Performance Chart)

20  $\varnothing$  2.0 mm

· Orifice Range:  $\varnothing$  0.4 -  $\varnothing$  2.7 mm

### Z SPRINGS

Cracking pressure

03 0.3 bar

10 1.0 bar

20 2.0 bar

35 3.5 bar

50 5.0 bar

70 7.0 bar