

Ordering Code: **NC-5A-X-Y-N-Z**

28.57 Hex. (1-1/8 inch)

1.0"-14UNS-2A

Restricted Flow (Inlet) ②

Free Flow (Inlet) ①

17.5

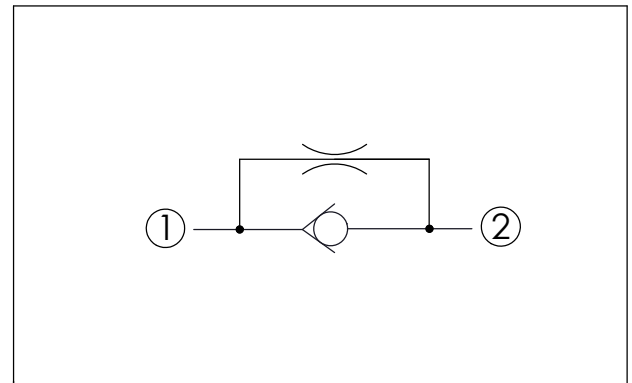
4.7

41.47 (Ref.)

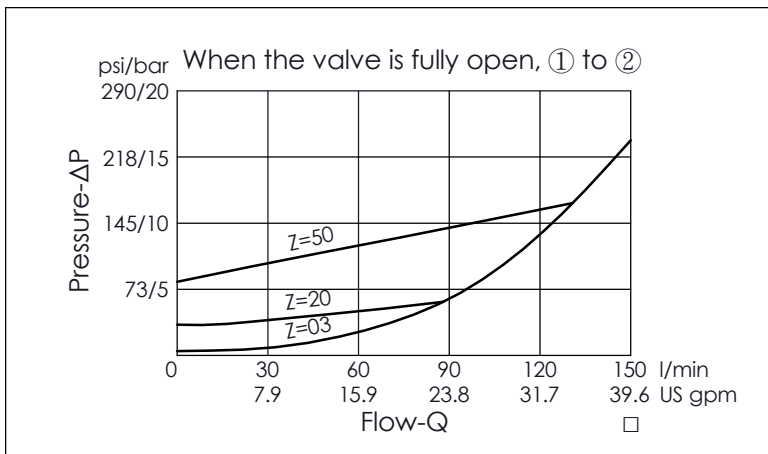
Locating Shoulder

UNIT:mm

Illustrations / detail are for reference only. Data subject to change.



| TECHNICAL DATA | | |
|------------------------------|---------|-------|
| Max. operating pressure: | 350 | bar |
| (Refer To Performance Chart) | | |
| Rated flow: | 120 | l/min |
| (Refer To Performance Chart) | | |
| Cavity-Tooling: | 5A-2 | |
| Installation torque: | 60 - 70 | Nm |
| Weight: | 0.184 | kg |



| X | OPERATION | |
|----|--------------------|--|
| 20 | ① to ② (Free Flow) | |

| Y | OPTIONS | |
|--|--|--|
| | Maximum Nominal Orifice (Refer To Performance Chart) | |
| 20 | ∅2.0 mm | |
| <ul style="list-style-type: none"> Orifice Range: ∅0.4 - ∅3.2 mm Refer to T.101.106.E Technical Information : ORIFICE VS. PRESSURE DROP CURVES CHART | | |

| Z | SPRINGS | |
|----|-------------------|--|
| | Cracking pressure | |
| 03 | 0.3 bar | |
| 10 | 1.0 bar | |
| 20 | 2.0 bar | |
| 35 | 3.5 bar | |
| 50 | 5.0 bar | |
| 70 | 7.0 bar | |