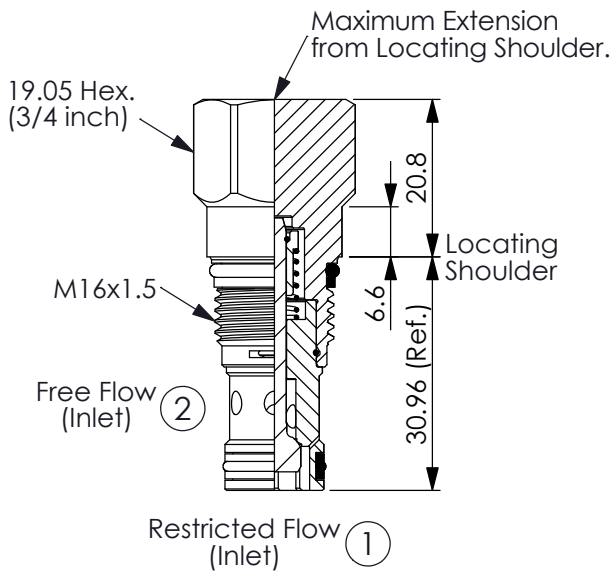
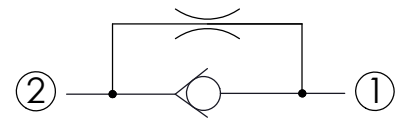


Ordering Code: **NC-162A-X-Y-N-Z**



UNIT:mm

Illustrations / detail are for reference only. Data subject to change.



TECHNICAL DATA

Max. operating pressure: 350 bar
(Refer To Performance Chart)

Rated flow: 30 l/min
(Refer To Performance Chart)

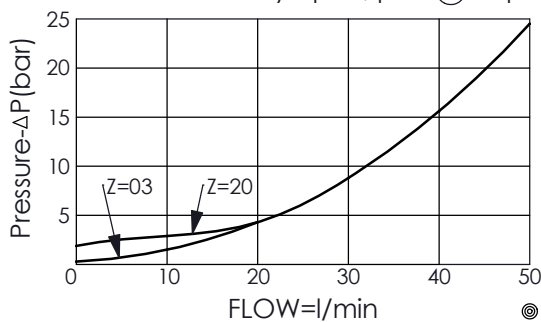
Cavity-Tooling: 162A-2

Installation torque: 27 - 33 Nm

Weight: 0.073 kg

Performance Chart

When the valve is fully open, port ② to port ①



X OPERATION

21 ② to ① (Free Flow)

Z SPRINGS

Cracking pressure

03 0.3 bar

20 2.0 bar

50 5.0 bar

Y OPTIONS

Maximum Nominal Orifice (Port ① to Port ②)

04 $\varnothing 0.4$ mm

- Orifice Range: $\varnothing 0.4$ - $\varnothing 1.6$ mm
- Refer to T.101.106.E Technical Information : ORIFICE VS. PRESSURE DROP CURVES CHART