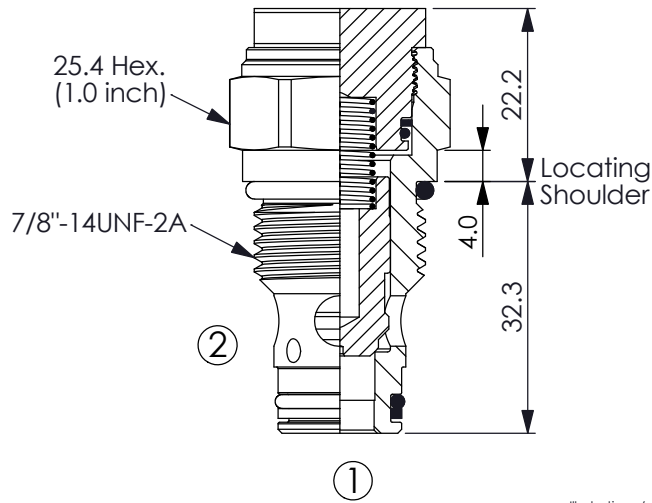
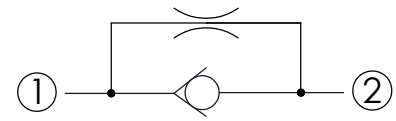


Ordering Code: **NC-10W-X-Y-N-Z**



UNIT:mm

Illustrations / detail are for reference only. Data subject to change.



### TECHNICAL DATA

Max. operating pressure: 350 bar  
(Refer to performance chart)

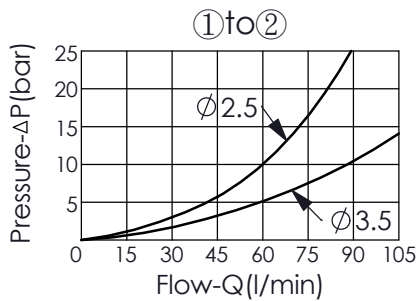
Rated flow: ①to② 60 l/min  
(Refer to performance chart)

Cavity-Tooling: 10W-2

Installation torque: 35 - 45 Nm

Weight: 0.09 kg

Z=03



### X OPERATION

**22** Standard Type

**Y**

### OPTIONS

Orifice Diameter (Port ② to Port ①)

**50** Ø 5.0 mm

**35** Ø 3.5 mm

**25** Ø 2.5 mm

**15** Ø 1.5 mm

Refer to T.101.106.E Technical Information :  
ORIFICE VS. PRESSURE DROP CURVES CHART

**Z**

### OPTIONS

Cracking Pressure (Port ① to Port ②)

**03** 0.3 bar

**10** 1.0 bar

**50** 5.0 bar