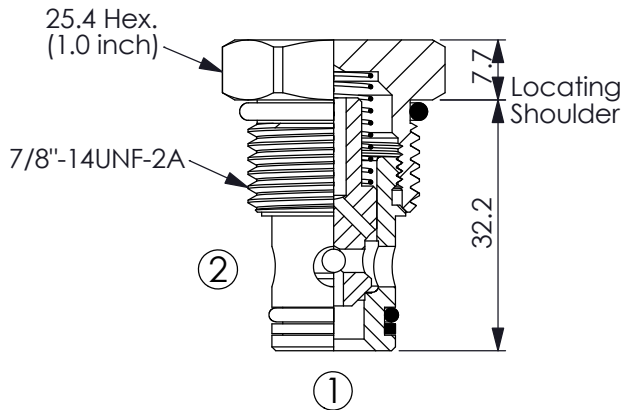
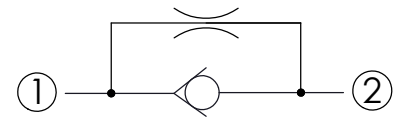


Ordering Code: **NC-10W-X-Y-N-Z**



UNIT:mm

Illustrations / detail are for reference only. Data subject to change.



TECHNICAL DATA

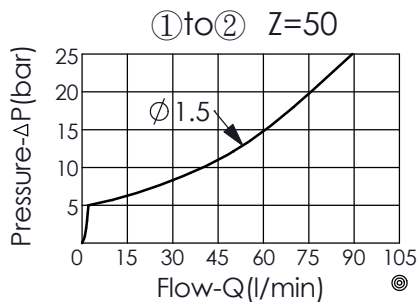
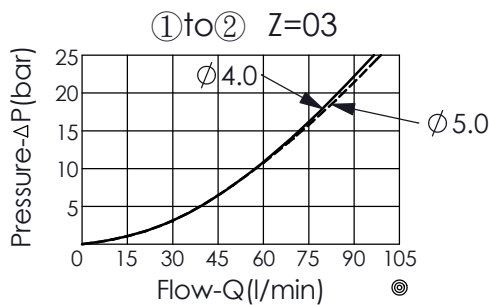
Max. operating pressure: 350 bar
(Refer To Performance Chart)

Rated flow: ①to② 60 l/min
(Refer To Performance Chart)

Cavity-Tooling: 10W-2

Installation torque: 35 - 45 Nm

Weight: 0.074 kg



X	OPERATION	
20	Standard Type	

Y	OPTIONS	
	Orifice Diameter (Port ② to Port ①)	
50	∅ 5.0 mm	
40	∅ 4.0 mm	
35	∅ 3.5 mm	
25	∅ 2.5 mm	
15	∅ 1.5 mm	

Z	OPTIONS	
	Cracking Pressure (Port ① to Port ②)	
03	0.3 bar	
10	1.0 bar	
50	5.0 bar	

Refer to T.101.106.E Technical Information :
ORIFICE VS. PRESSURE DROP CURVES CHART