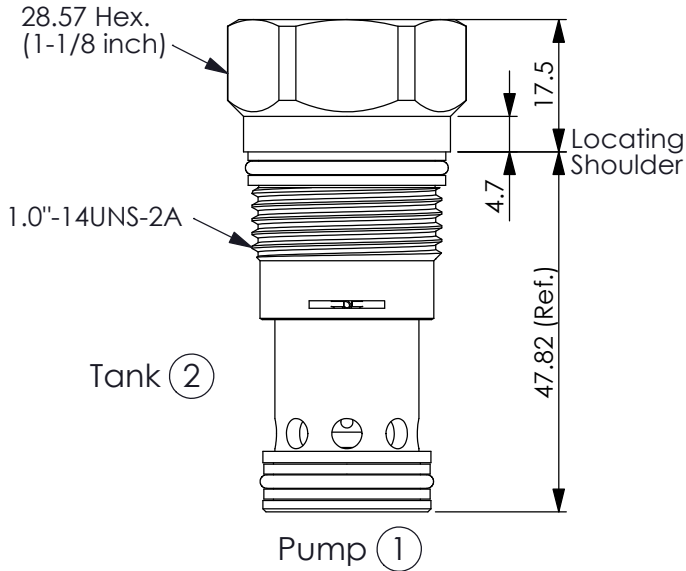


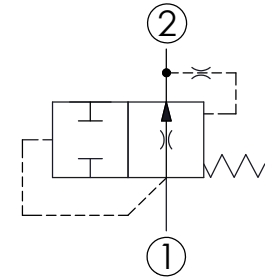
AIR BLEED START-UP VALVE

Ordering Code: **NQ-3A-X-Y-Z**

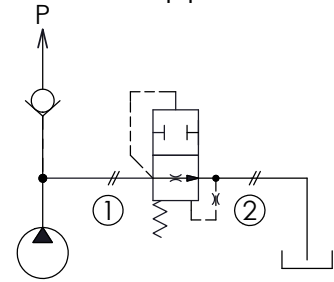


UNIT:mm

Illustrations / detail are for reference only. Data subject to change.



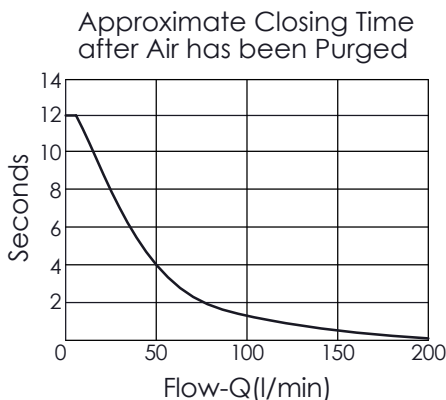
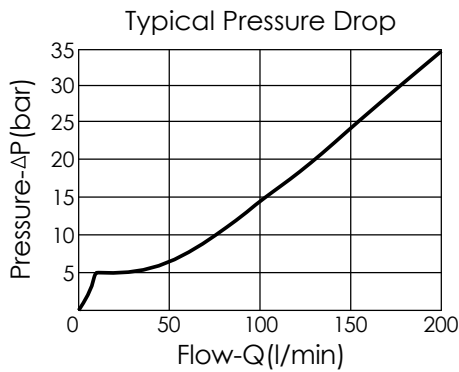
Application Example



TECHNICAL DATA

Max. Operating pressure:	350	bar
Rated flow:	15 - 200	l/min
Cavity-Tooling:	3A-2	
Installation torque:	60 - 70	Nm
Weight:	0.18	kg

- Air-bleed and start-up valves require a minimum of 15 L/min. flow rate 5.5 bar system pressure
- The valve will re-open when system pressure falls below 1.7 bar
- After air been purged, closing times vary from approximately 12 seconds at 15 L/min. to 0.5 seconds at 200 L/min.



X	OPERATION	
20	Standard Type	

Y	FLOW RANGE	
A	15 - 200 LPM	

Z	OPTIONS	
N	Non-adjustable	
NP	Non-adjustable With stainless steel external metal components (Buna-N Seal)	