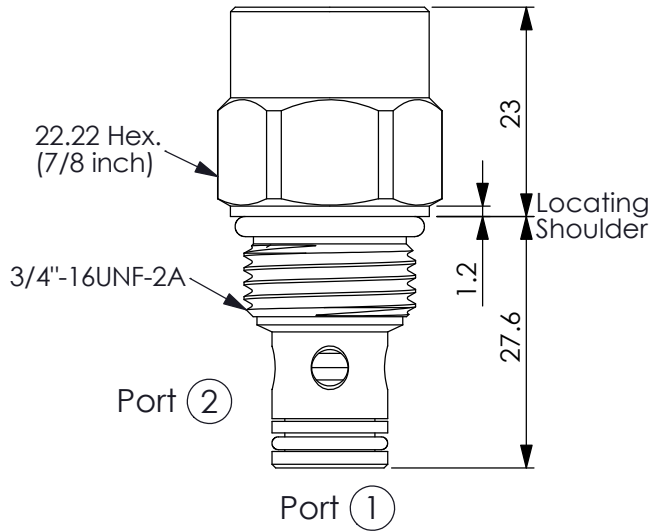


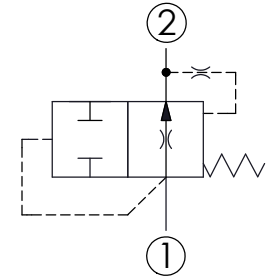
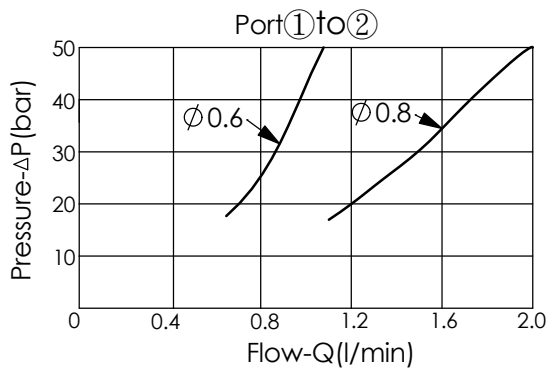
START UP VALVE

Ordering Code: **NS-08W-X-Y-Z**

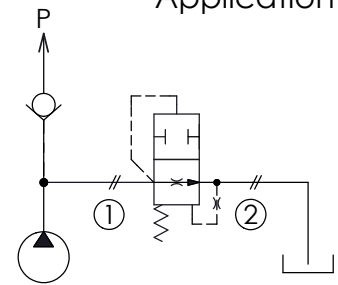


UNIT:mm

Illustrations / detail are for reference only. Data subject to change.



Application Example



TECHNICAL DATA

Pressure min-max: 10 - 350 bar

Rated flow: See Performance Chart

Cavity-Tooling: 08W-2

Installation torque: 25 - 35 Nm

Weight: 0.10 kg

The start-up valves enable the launch of single-phase AC-motors until full or high load

X

OPERATION

20

① to ② (Free Flow)

Y

OPTIONS

	Orifice	Min. Operating Pressure
060	$\phi 0.6$ mm	10.0 bar
	Min. using flow: 0.7 LPM	
080	$\phi 0.8$ mm	10.0 bar
	Min. using flow: 1.1 LPM	

Z

OPTIONS

N

Non-adjustable