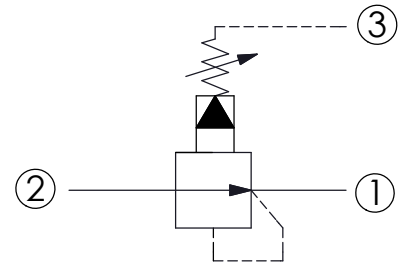
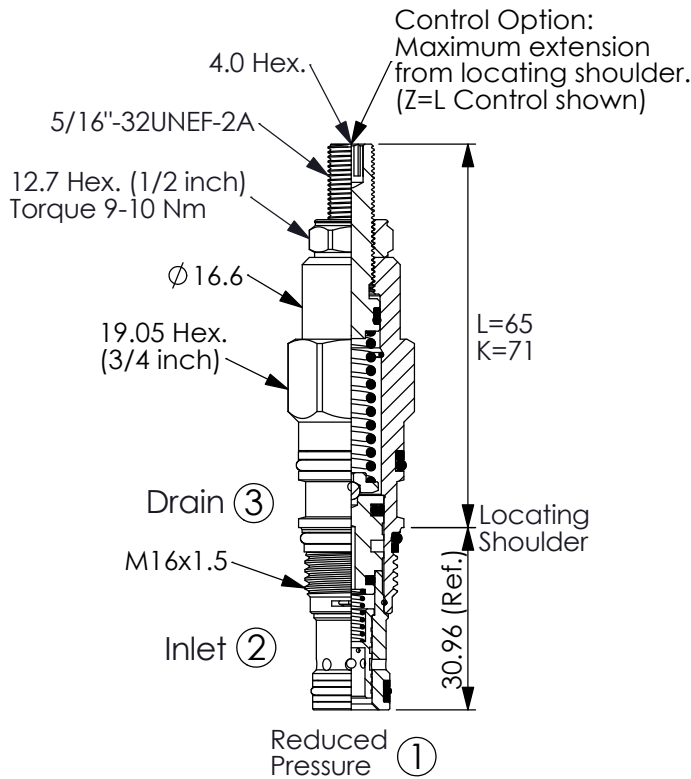


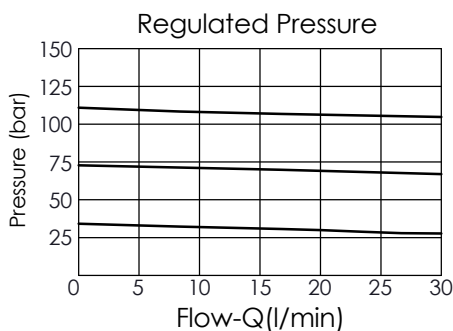
Ordering Code: **PB-163A-X-Y-Z**



### TECHNICAL DATA

Max. Operating pressure:	350	bar
Rated flow:	20	l/min
Cavity-Tooling:	163A-3	
Installation torque:	27-33	Nm
Weight:	0.11 (Z=L)	kg
<ul style="list-style-type: none"> <li>Control Pilot Flow (0.11-0.16 L/min.)</li> <li>Pressure at port ③ is directly additive to the valve setting at a 1:1 ratio and should not exceed 350 bar.</li> </ul>		

UNIT:mm



Y	SPRINGS	
	ADJUSTMENT RANGES	
A	5-210 bar (14 bar Standard Setting)	Maximum Differential=210 bar
B	5-105 bar (14 bar Standard Setting)	Maximum Differential=210 bar
N	5-55 bar (14 bar Standard Setting)	Maximum Differential=210 bar
Q	5-28 bar (14 bar Standard Setting)	Maximum Differential=210 bar
W	5-315 bar (14 bar Standard Setting)	

X	OPERATION	
30	Standard Type	

Z	OPTIONS	
L	Leakproof hex. socket screw.	
LP	Leakproof hex. socket screw. With stainless steel external metal components	
K	Handknob with Lock Knob. (Order Code: 7ZAK001)	
C	Stainless Steel Tamper Resistant Cover.	