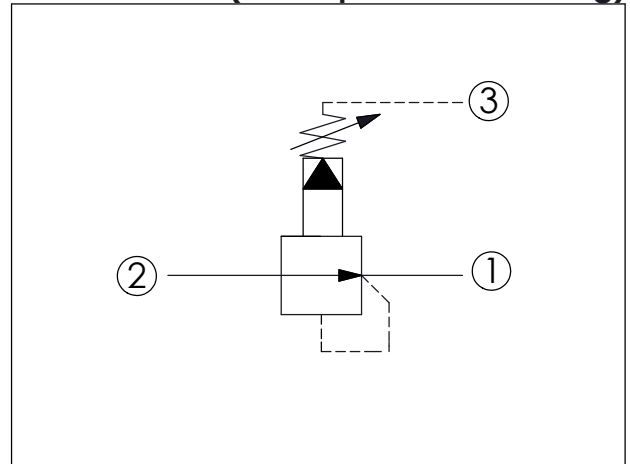
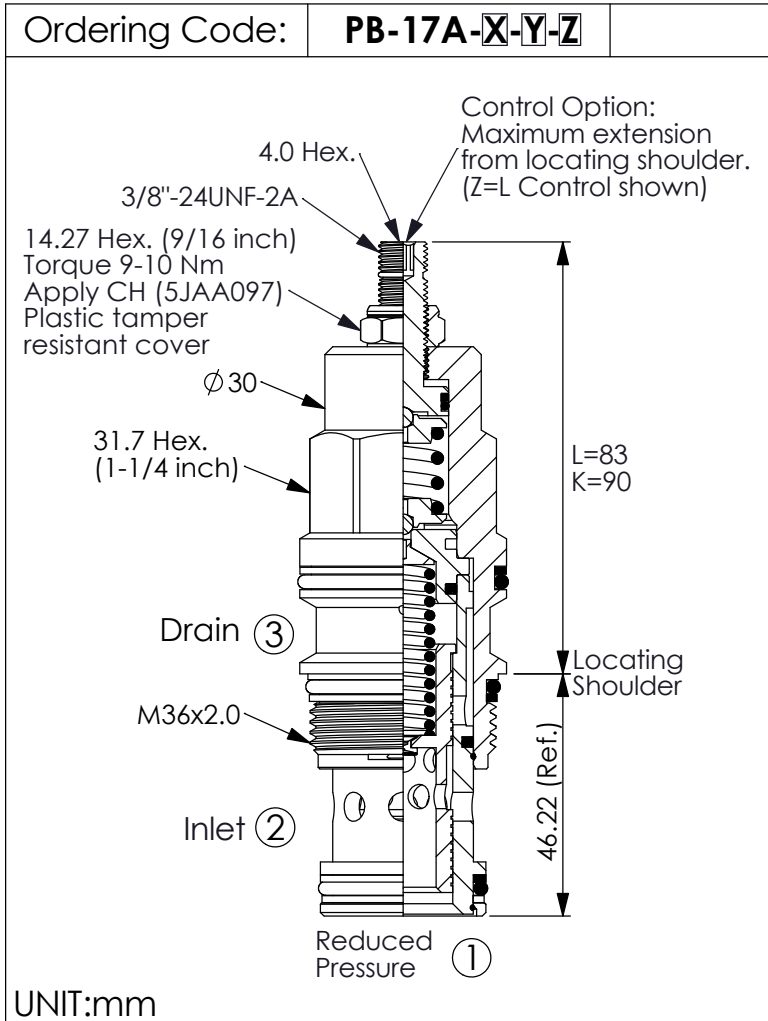
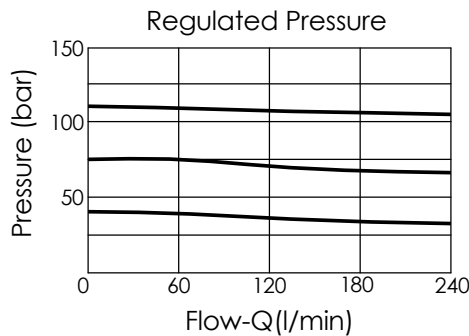


REDUCING VALVE (Pilot Operated Reducing)



TECHNICAL DATA

Max.Operating pressure:	350	bar
Rated flow:	160	l/min
Cavity-Tooling:	17A-3	
Installation torque:	200-215	Nm
Weight:	0.57 (Z=L)	kg
Control Pilot Flow (0.25-0.33 L/min.)		



X	OPERATION	
30	Standard Type	
35	Impact Resistant Type (Without Filter)	

Y	SPRINGS	
	ADJUSTMENT RANGES	
A	7-210 bar (14 bar Standard Setting)	Maximum Differential=210 bar
B	3.5-105 bar (14 bar Standard Setting)	Maximum Differential=210 bar
C	10.5-420 bar (14 bar Standard Setting)	
D	1.7-55 bar (14 bar Standard Setting)	Maximum Differential=140 bar
E	1.7-28 bar (14 bar Standard Setting)	Maximum Differential=140 bar
H	2-210 bar (14 bar Standard Setting)	Maximum Differential=210 bar
N	4-55 bar (14 bar Standard Setting)	Maximum Differential=140 bar
Q	4-28 bar (14 bar Standard Setting)	Maximum Differential=140 bar
W	10.5-315 bar (14 bar Standard Setting)	

Z	OPTIONS	
L	Leakproof hex. socket screw.	
LP	Leakproof hex. socket screw. With stainless steel external metal components	
K	Handknob with Lock Knob. (Order Code: 6ZAK001)	