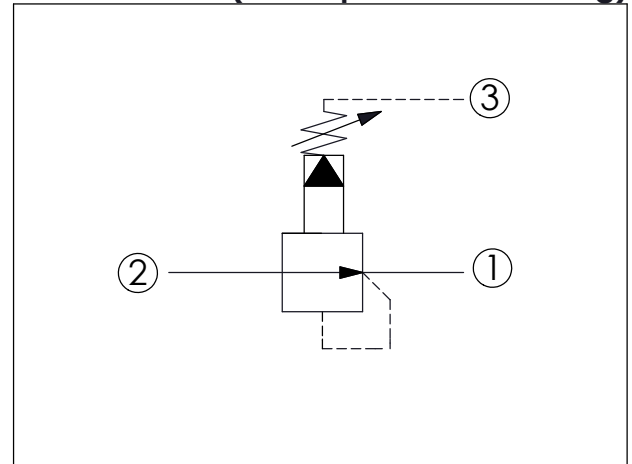
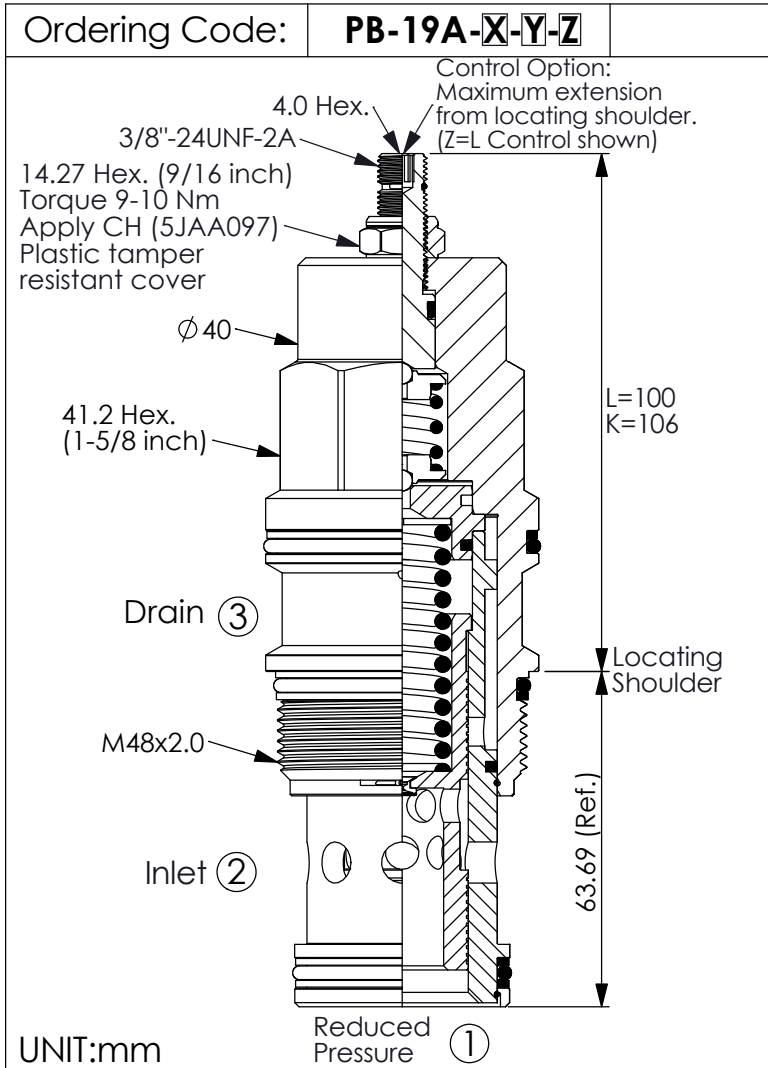
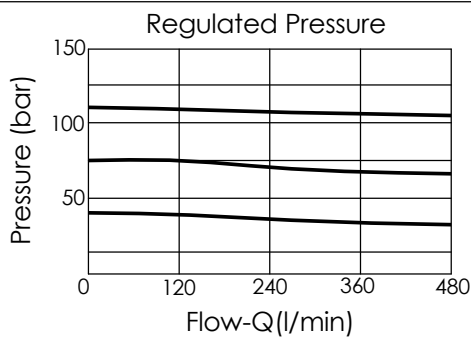


REDUCING VALVE (Pilot Operated Reducing)



TECHNICAL DATA

Max.Operating pressure:	350	bar
Rated flow:	320	l/min
Cavity-Tooling:	19A-3 (19AB-3)	
Installation torque:	465-500	Nm
Weight:	1.31 (Z=L)	kg
Control Pilot Flow (0.25-0.33 L/min.)		



X OPERATION

30	Standard Type
35	Impact Resistant Type (Without Filter)

Y SPRINGS ADJUSTMENT RANGES

A	7-210 bar (14 bar Standard Setting) Maximum Differential=210 bar
B	3.5-105 bar (14 bar Standard Setting) Maximum Differential=210 bar
C	10.5-420 bar (14 bar Standard Setting)
D	1.7-55 bar (14 bar Standard Setting) Maximum Differential=140 bar
E	1.7-28 bar (14 bar Standard Setting) Maximum Differential=140 bar
H	2-210 bar (14 bar Standard Setting) Maximum Differential=210 bar
*J	1.7-105 bar (14 bar Standard Setting)
N	4-55 bar (14 bar Standard Setting) Maximum Differential=140 bar
Q	4-28 bar (14 bar Standard Setting) Maximum Differential=140 bar
W	10.5-315 bar (14 bar Standard Setting)

* Maximum differential pressure...Any technical questions, please feel free to consult with our sales dept.

Z OPTIONS

L	Leakproof hex. socket screw.	
LP	Leakproof hex. socket screw. With stainless steel external metal components	
K	Handknob with Lock Knob. (Order Code: 6ZAK001)	