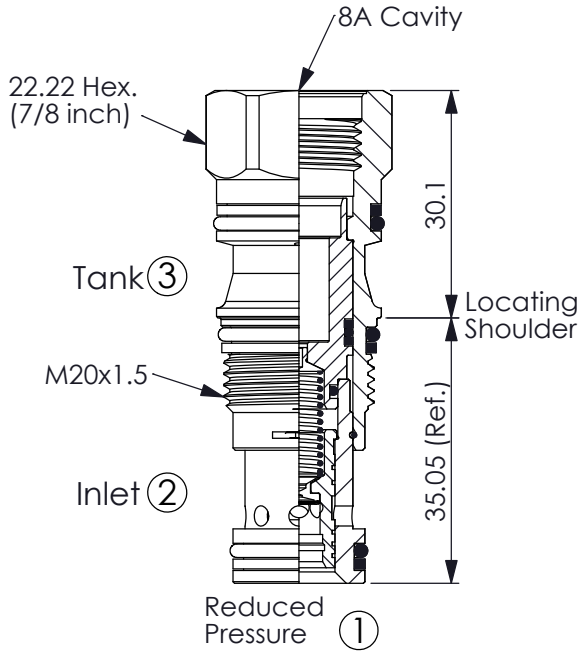


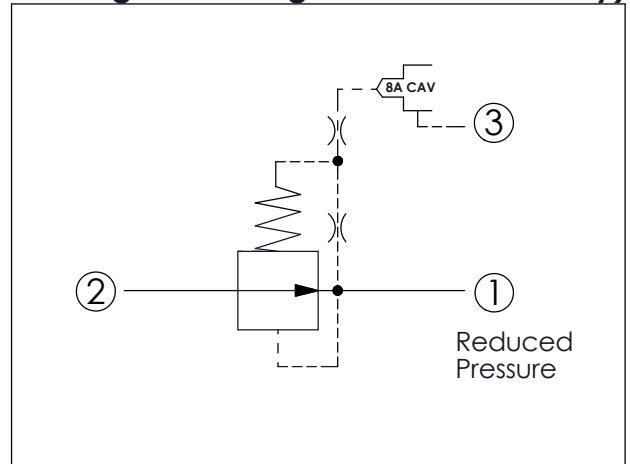
(Pilot Operated Reducing main stage with integral 8A control cavity)

Ordering Code: **PB-11A-X-Y-8**



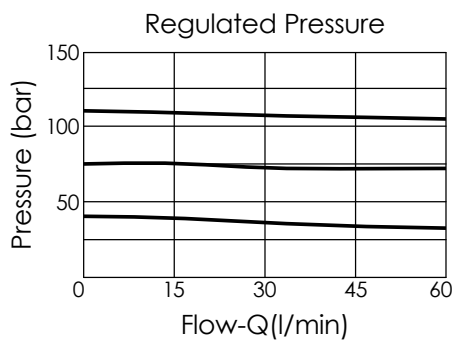
UNIT:mm

Illustrations / detail are for reference only. Data subject to change.



TECHNICAL DATA

Max.Operating pressure:	350	bar
Rated flow:	40	l/min
Cavity-Tooling:	11A-3	
Installation torque:	40 - 50	Nm
Weight:	0.10	kg
Control Pilot Flow (0.11 - 0.16 L/min.)		



X OPERATION

30 Standard Type

Y SPRINGS

MINIMUM CONTROL PRESSURE

D 1.7 bar (25 psi)

W 7 bar (100 psi)

Maximum inlet pressure is determined by the bias spring. The D spring is limited to 140 bar (2000 psi) maximum differential pressure and the W spring is limited to 350 bar (5000 psi) maximum inlet pressure.