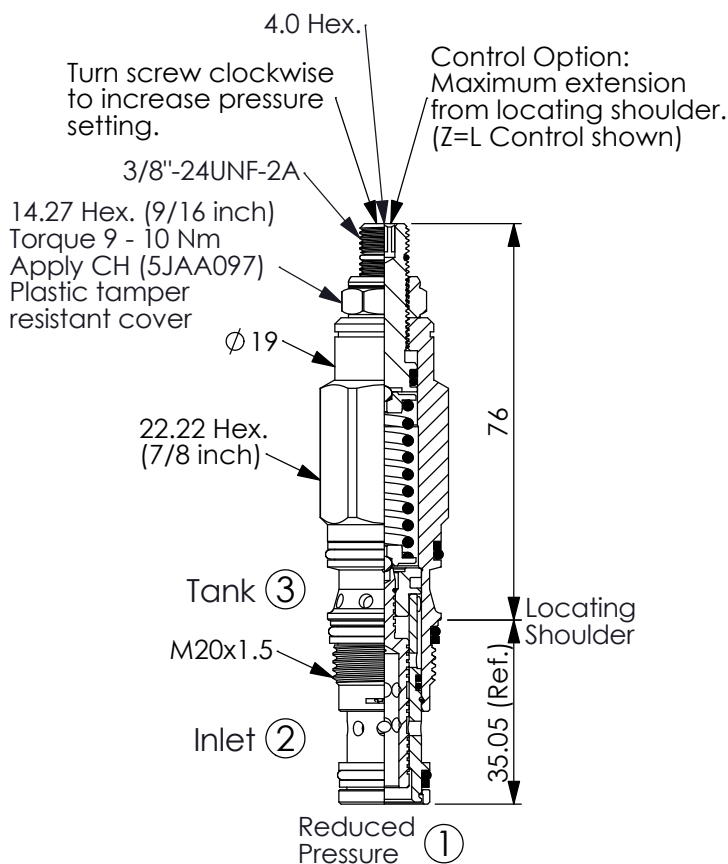
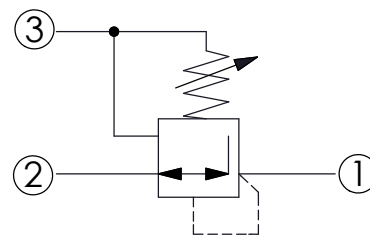
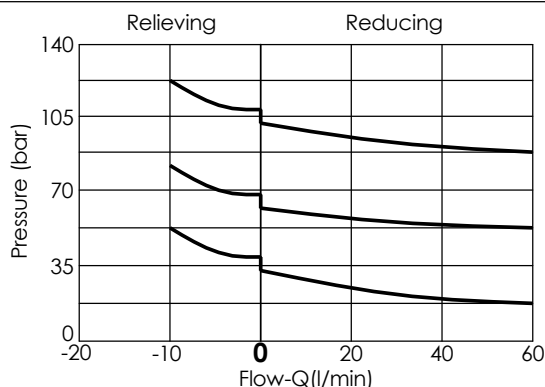


Ordering Code: **PD-11A-X-Y-Z**



UNIT:mm

Illustrations / detail are for reference only.
Data subject to change.



TECHNICAL DATA

Max.Operating pressure:	350	bar
Rated flow:	40	l/min
Cavity-Tooling:	11A-3	
Installation torque:	40 - 50	Nm
Weight:	0.19 (Z=L)	kg

X OPERATION

30	Standard type, with closed transition
38	Standard type, with open transition

• Maximum Leakage Approximately (30 cc/min./70 bar)

Z OPTIONS

L	Leakproof hex. socket screw.	
LP	Leakproof hex. socket screw. With stainless steel external metal components	
C	Stainless Steel Tamper Resistant Cover.	
T	Three-winged Handknob Kit.	
KF	Handknob with Panel Mount.	
BA	Handknob and aluminum locknut.	

Y SPRINGS

ADJUSTMENT RANGES

A	35 - 210 bar (50 bar Standard Setting)
B	3.5 - 105 bar (14 bar Standard Setting)
D	1.7 - 55 bar (14 bar Standard Setting)
E	1.7 - 28 bar (14 bar Standard Setting)
H	7 - 210 bar (50 bar Standard Setting)
S	1.7 - 14 bar (7 bar Standard Setting)
W	50 - 315 bar (70 bar Standard Setting)