

Ordering Code: **PD-2A-X-Y-Z**

Turn screw clockwise to increase pressure setting.

Control Option: Maximum extension from locating shoulder. (Z=L Control shown)

4.0 Hex.

3/8"-24UNF-2A

14.27 Hex. (9/16 inch)
Torque 9 - 10 Nm
Apply CH (5JAA097)
Plastic tamper resistant cover

Ø25

28.57 Hex. (1-1/8 inch)

88

Tank ③

1.0"-14UNS-2A

Inlet ②

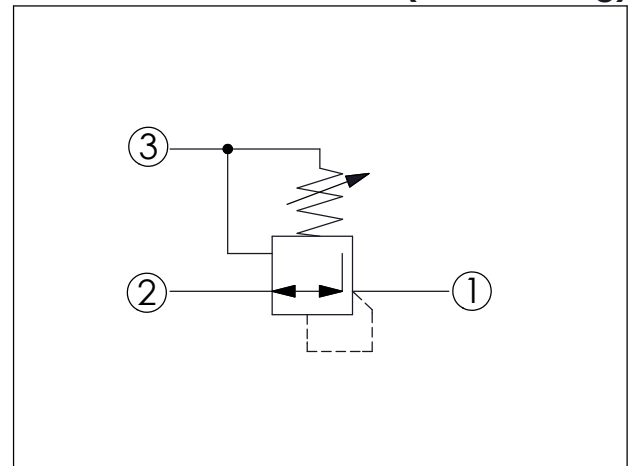
Reduced pressure ①

Locating Shoulder

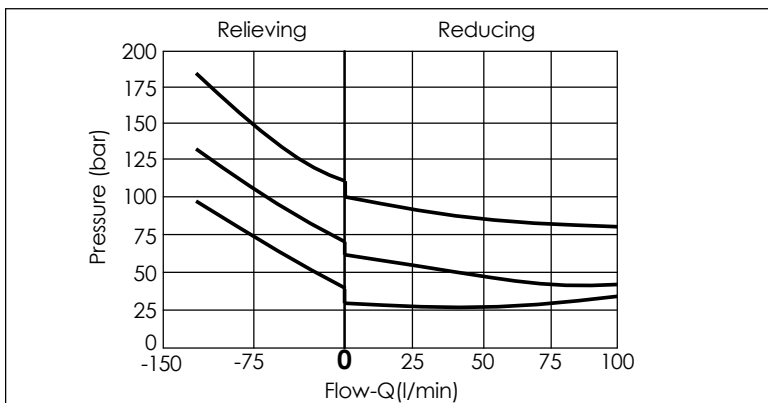
35.12 (Ref.)

UNIT:mm

Illustrations / detail are for reference only. Data subject to change.



TECHNICAL DATA		
Max. Operating pressure:	350	bar
Rated flow:	80	l/min
Cavity-Tooling:	2A-3	
Installation torque:	60 - 70	Nm
Weight:	0.35 (Z=L)	kg



X	OPERATION	
30	Standard Type	
• Maximum Leakage Approximately (50 cc/min./70 bar)		

Y	SPRINGS	
	ADJUSTMENT RANGES	
A	50 - 210 bar	(70 bar Standard Setting)
B	20 - 105 bar	(35 bar Standard Setting)
D	14 - 55 bar	(28 bar Standard Setting)
E	7 - 28 bar	(14 bar Standard Setting)
W	70 - 315 bar	(70 bar Standard Setting)

Z	OPTIONS	
L	Leakproof hex. socket screw.	
C	Stainless Steel Tamper Resistant Cover.	
K	Handknob with Lock Knob. (Order Code: 6ZAK001)	