

REDUCING VALVE (Restrictive Compensator, Direct Acting)

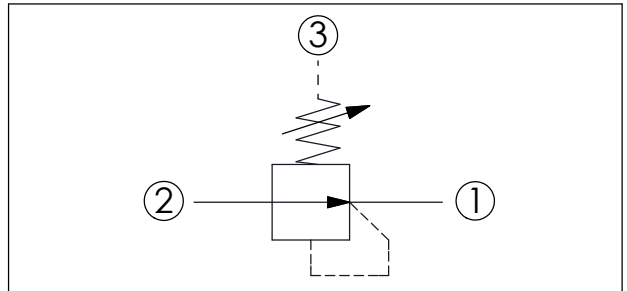
Ordering Code: **PD-11A-X-Y-Z**

Turn screw clockwise to increase pressure setting.

Control Option: Maximum extension from locating shoulder. (Z=L Control shown)

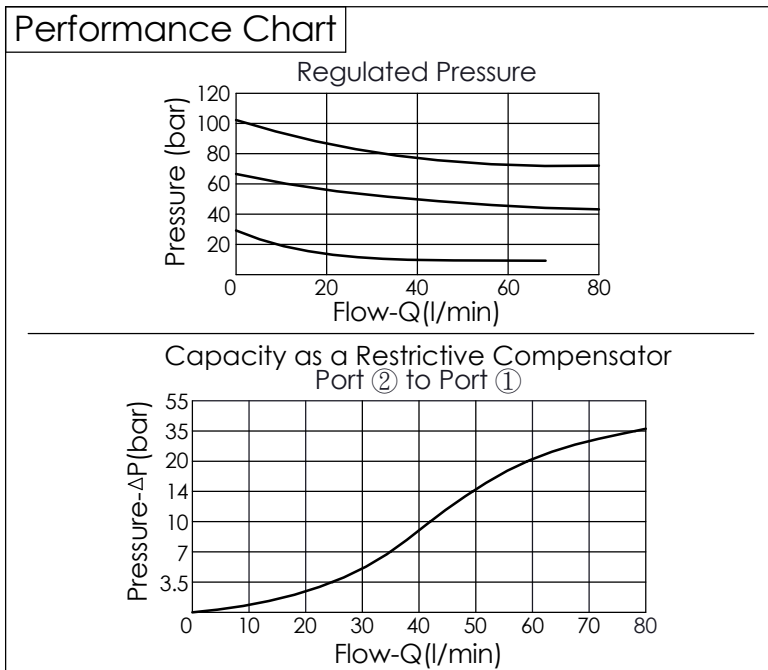
UNIT:mm

Illustrations / detail are for reference only. Data subject to change.



TECHNICAL DATA	
Max.Operating pressure:	350 bar
Rated flow:	40 l/min (Refer to performance chart)
Cavity-Tooling:	11A-3
Installation torque:	40 - 50 Nm
Weight:	0.19 (Z=L) kg

OPERATION	
3J	Without Relief function
<ul style="list-style-type: none"> Maximum Leakage Approximately (30 cc/min./70 bar) Please pay attention when using this valve in a dead-head application (no flow from port ① to port ②) because it is without relieving function. The pressure may continue increase obviously because of the very low leakage at the reduced pressure side of the circuit. The pressure at port ① will not stop at the pressure setting of the spring, it will gradually increase toward port ② according to the flow. When the pressure drop of LP-*30 is 14 bar, the orifice is not able to satisfy customer's demand for big flow. We suggest choosing PD-*3J, which has bigger orifice and is able to be adjusted to higher pressure drop to get bigger flow pass through. 	



OPTIONS	
L	Leakproof hex. socket screw.
LP	Leakproof hex. socket screw. With stainless steel external metal components
C	Stainless Steel Tamper Resistant Cover.
CP	Stainless Steel Tamper Resistant Cover. With stainless steel external metal components
K	Handknob with Lock Knob. (Order Code: 6ZAK001)

Y	SPRINGS	
	ADJUSTMENT RANGES	
A	35 - 210 bar	(50 bar Standard Setting)
B	3.5 - 105 bar	(14 bar Standard Setting)
D	1.7 - 55 bar	(14 bar Standard Setting)
E	1.7 - 28 bar	(14 bar Standard Setting)
S	1.7 - 14 bar	(7 bar Standard Setting)
W	50 - 315 bar	(70 bar Standard Setting)