

REDUCING VALVE (Restrictive Compensator, Direct Acting)

Ordering Code: **PD-2A-X-Y-Z**

Turn screw clockwise to increase pressure setting.

Control Option: Maximum extension from locating shoulder. (Z=L Control shown)

3/8"-24UNF-2A

14.27 Hex. (9/16 inch)
Torque 9 - 10 Nm
Apply CH (5JAA097)
Plastic tamper resistant cover

4.0 Hex.

Ø25

28.57 Hex. (1-1/8 inch)

Tank ③

1.0"-14UNS-2A

Inlet ②

Reduced Pressure ①

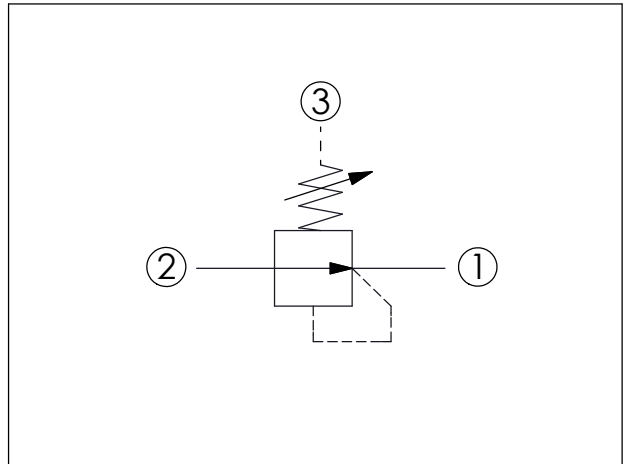
87

35.12 (Ref.)

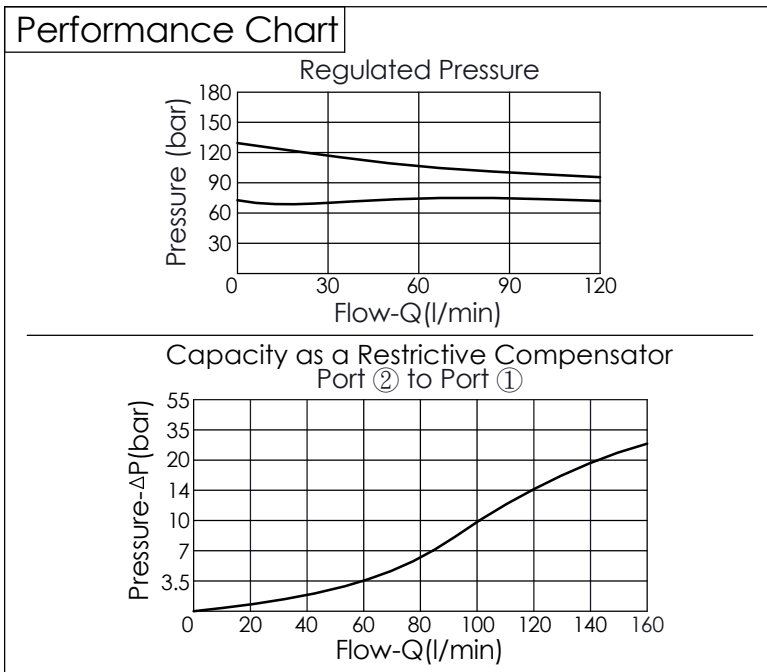
Locating Shoulder

UNIT:mm

Illustrations / detail are for reference only. Data subject to change.



TECHNICAL DATA	
Max. Operating pressure:	350 bar
Rated flow:	80 l/min (Refer to performance chart)
Cavity-Tooling:	2A-3
Installation torque:	60 - 70 Nm
Weight:	0.36 (Z=L) kg



X	OPERATION
3J	Without Relief function
	<ul style="list-style-type: none"> Maximum Leakage Approximately (50 cc/min./70 bar) Please pay attention when using this valve in a dead-head application (no flow from port ① to port ②) because it is without relieving function. The pressure may continue increase obviously because of the very low leakage at the reduced pressure side of the circuit. The pressure at port ① will not stop at the pressure setting of the spring, it will gradually increase toward port ② according to the flow. When the pressure drop of LP-30 is 14 bar, the orifice is not able to satisfy customer's demand for big flow. We suggest choosing PD-3J, which has bigger orifice and is able to be adjusted to higher pressure drop to get bigger flow pass through.

Y	SPRINGS	
	ADJUSTMENT RANGES	
A	50 - 210 bar	(70 bar Standard Setting)
B	20 - 105 bar	(35 bar Standard Setting)
D	14 - 55 bar	(28 bar Standard Setting)
E	7 - 28 bar	(14 bar Standard Setting)
S	3.5 - 14 bar	(7 bar Standard Setting)
W	70 - 315 bar	(70 bar Standard Setting)

Z	OPTIONS	
L	Leakproof hex. socket screw.	
C	Stainless Steel Tamper Resistant Cover.	
K	Handknob with Lock Knob. (Order Code: 6ZAK001)	