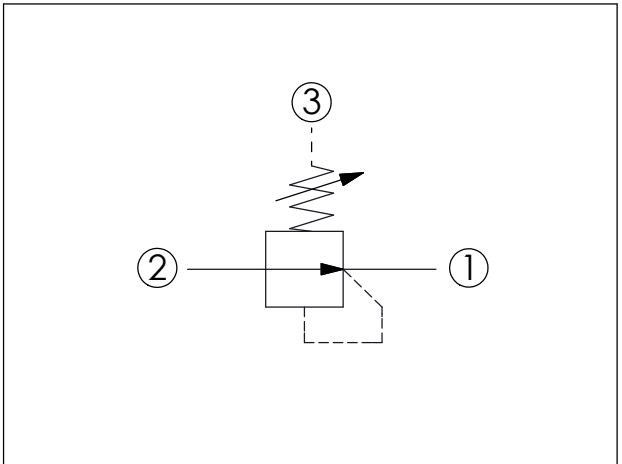
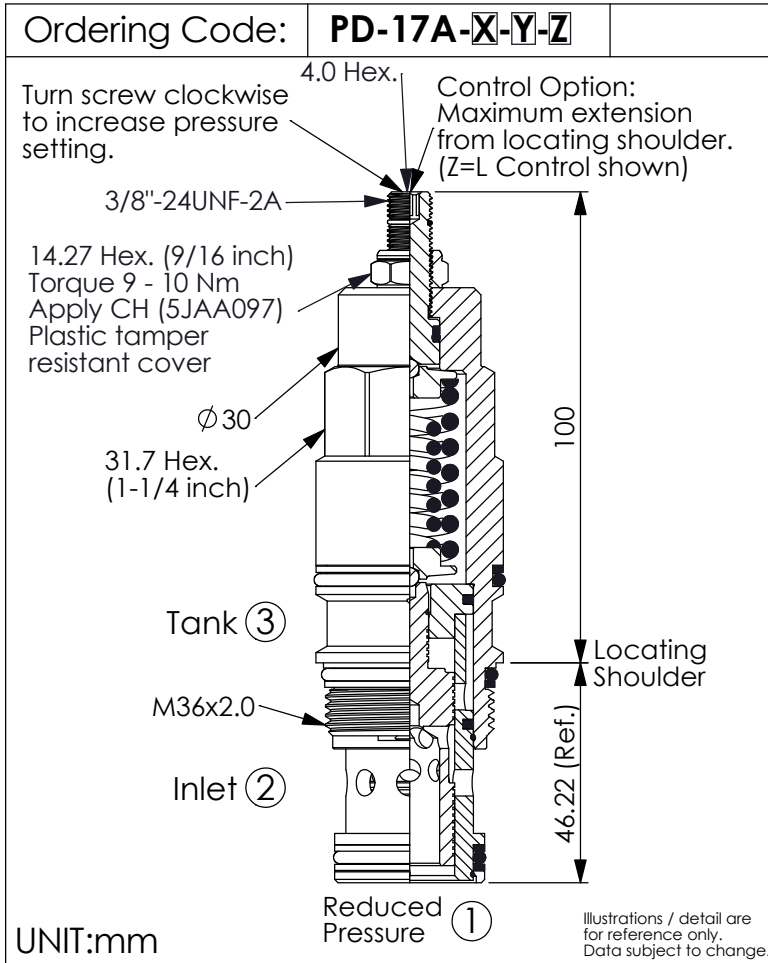


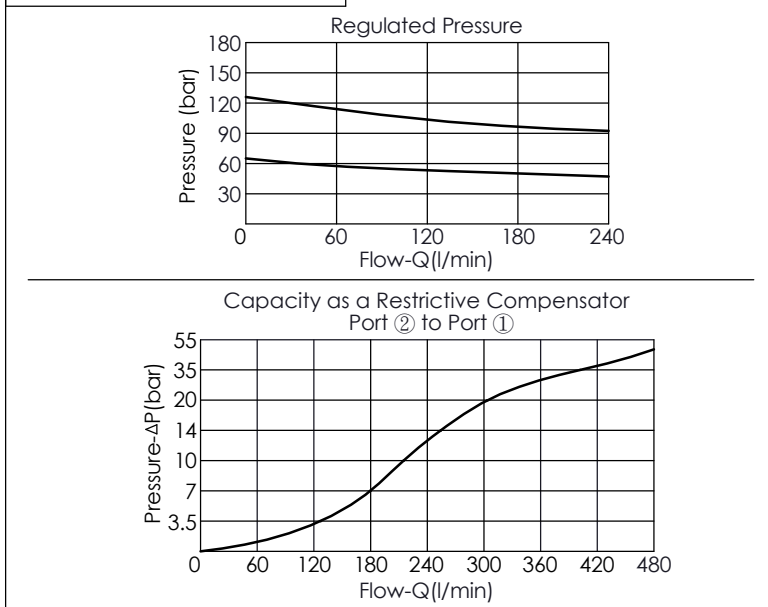
## REDUCING VALVE (Restrictive Compensator, Direct Acting)



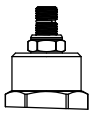
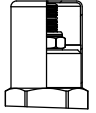
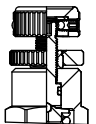
### TECHNICAL DATA

|                          |            |                                       |
|--------------------------|------------|---------------------------------------|
| Max. Operating pressure: | 350        | bar                                   |
| Rated flow:              | 160        | l/min<br>(Refer to performance chart) |
| Cavity-Tooling:          | 17A-3      |                                       |
| Installation torque:     | 200 - 215  | Nm                                    |
| Weight:                  | 0.71 (Z=L) | kg                                    |

### Performance Chart



| X  | OPERATION   |
|----|---|
| 3J | Without Relief function   |
|    | <ul style="list-style-type: none"> <li>Maximum Leakage Approximately (65 cc/min./70 bar)</li> <li>Please pay attention when using this valve in a dead-head application (no flow from port ① to port ②) because it is without relieving function. The pressure may continue increase obviously because of the very low leakage at the reduced pressure side of the circuit. The pressure at port ① will not stop at the pressure setting of the spring, it will gradually increase toward port ② according to the flow.</li> <li>When the pressure drop of LP-*30 is 14 bar, the orifice is not able to satisfy customer's demand for big flow. We suggest choosing PD-*3J, which has bigger orifice and is able to be adjusted to higher pressure drop to get bigger flow pass through.</li> </ul> |

| Z | OPTIONS  |
|---|--|
| L | Leakproof hex. socket screw.                    |
| C | Stainless Steel Tamper Resistant Cover.         |
| K | Handknob with Lock Knob. (Order Code: 6ZAK001)  |

| Y | SPRINGS                                |
|---|--|
|   | ADJUSTMENT RANGES                      |
| A | 50 - 210 bar (70 bar Standard Setting) |
| B | 20 - 105 bar (35 bar Standard Setting) |
| D | 14 - 55 bar (28 bar Standard Setting)  |
| E | 7 - 28 bar (14 bar Standard Setting)   |
| S | 3.5 - 14 bar (7 bar Standard Setting)  |
| W | 76 - 315 bar (76 bar Standard Setting) |