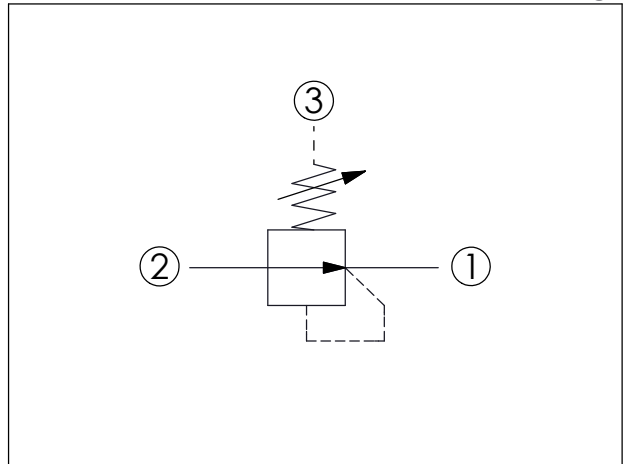
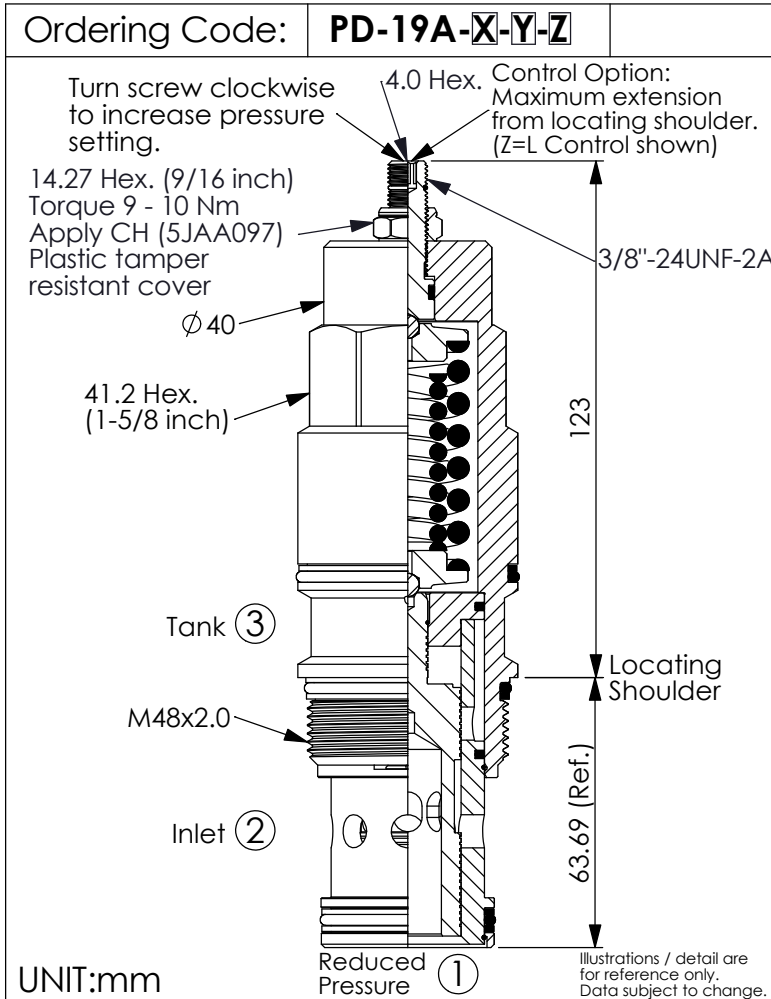


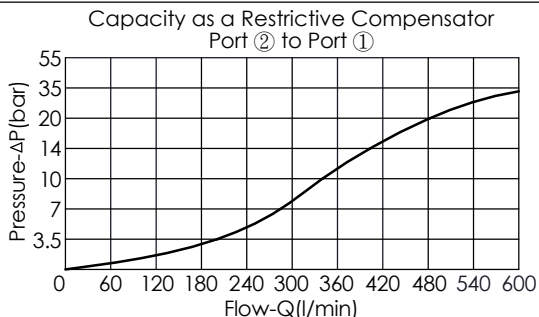
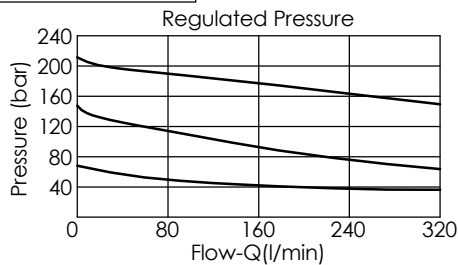
REDUCING VALVE (Restrictive Compensator, Direct Acting)



TECHNICAL DATA

Max. Operating pressure:	350	bar
Rated flow:	320	l/min (Refer to performance chart)
Cavity-Tooling:	19A-3 (19AB-3)	
Installation torque:	465 - 500	Nm
Weight:	1.59 (Z=L)	kg

Performance Chart



Y	SPRINGS	
	ADJUSTMENT RANGES	
A	50 - 210 bar	(70 bar Standard Setting)
B	20 - 105 bar	(35 bar Standard Setting)
D	14 - 55 bar	(28 bar Standard Setting)
E	7 - 28 bar	(14 bar Standard Setting)
S	3.5 - 14 bar	(7 bar Standard Setting)
W	76 - 315 bar	(76 bar Standard Setting)

X	OPERATION	
3J	Without Relief function	
<ul style="list-style-type: none"> Maximum Leakage Approximately (80 cc/min./70 bar) Please pay attention when using this valve in a dead-head application (no flow from port ① to port ②) because it is without relieving function. The pressure may continue increase obviously because of the very low leakage at the reduced pressure side of the circuit. The pressure at port ① will not stop at the pressure setting of the spring, it will gradually increase toward port ② according to the flow. When the pressure drop of LP-*-30 is 14 bar, the orifice is not able to satisfy customer's demand for big flow. We suggest choosing PD-*-3J, which has bigger orifice and is able to be adjusted to higher pressure drop to get bigger flow pass through. 		

Z	OPTIONS	
L	Leakproof hex. socket screw.	
C	Stainless Steel Tamper Resistant Cover.	
K	Handknob with Lock Knob. (Order Code: 6ZAK001)	