

Ordering Code: **PD-08W-X-Y-Z**

4.0 Hex.
Turn screw clockwise to increase pressure setting.

3/8"-24UNF-2A

14.27 Hex. (9/16 inch)
Torque 9 - 10 Nm
Apply CH (5JAA097)
Plastic tamper resistant cover

25.4 Hex. (1.0 inch)

3/4"-16UNF-2A

Tank (3)

Inlet (2)

Reduced pressure (1)

Control Option:
Maximum extension from locating shoulder.
(Z=L Control shown)

77.5

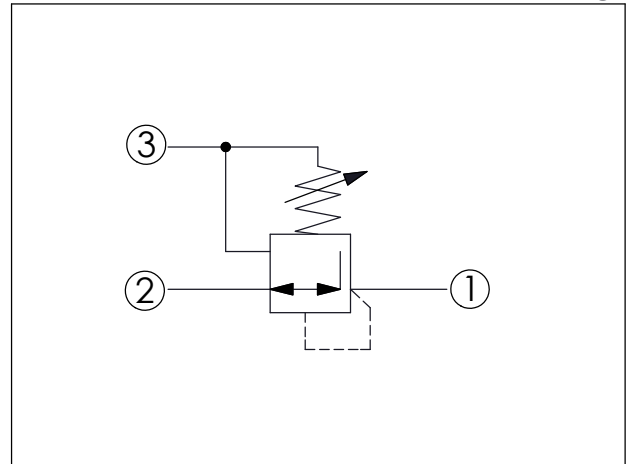
9.7

40.8

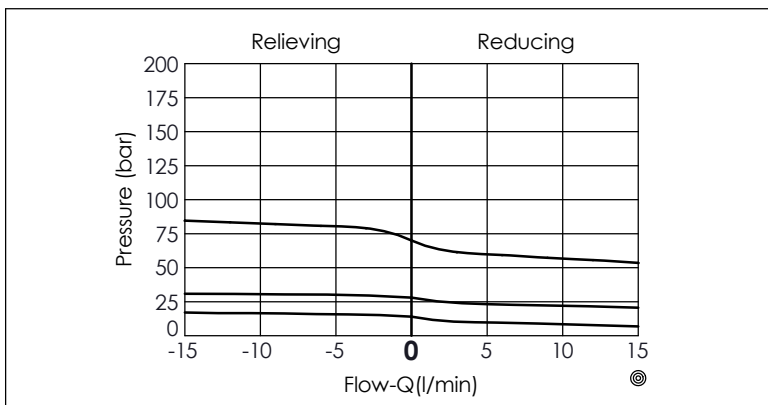
Locating Shoulder

UNIT:mm

Illustrations / detail are for reference only.
Data subject to change.



TECHNICAL DATA	
Max. Operating pressure:	240 bar
Rated flow:	12 l/min
Cavity-Tooling:	08W-3
Installation torque:	25 - 35 Nm
Weight:	0.212 (Z=L) kg



X	OPERATION	
32	Standard Type	
• Maximum Leakage Approximately (80 cc/min.)		

Y	SPRINGS	
	ADJUSTMENT RANGES	
B	20 - 83 bar	(35 bar Standard Setting)
D	10 - 42 bar	(14 bar Standard Setting)
E	3 - 21 bar	(14 bar Standard Setting)
K	34 - 152 bar	(70 bar Standard Setting)

Z	OPTIONS	
L	Leakproof hex. socket screw.	
C	Stainless Steel Tamper Resistant Cover.	
K	Handknob with Lock Knob. (Order Code: 6ZAK001)	