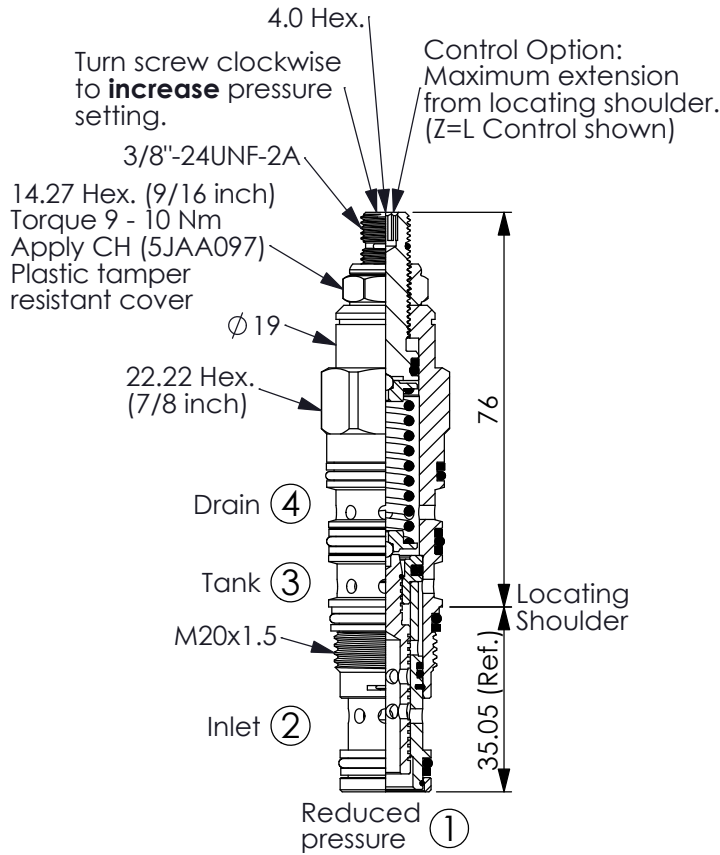
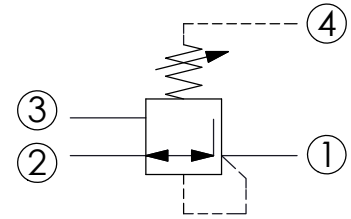


Ordering Code: **PD-21A-X-Y-Z**



UNIT:mm

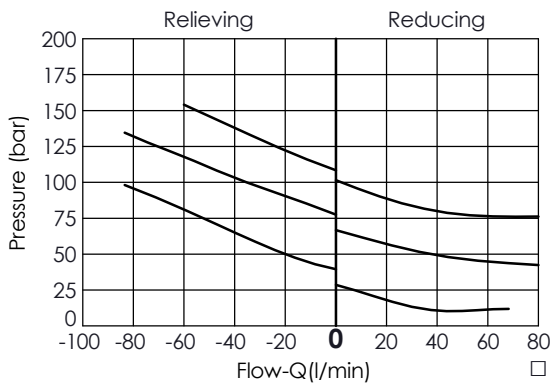
Illustrations / detail are for reference only. Data subject to change.



### TECHNICAL DATA

|                          |             |       |
|--------------------------|-------------|-------|
| Max. Operating pressure: | 350         | bar   |
| Rated flow:              | 40          | l/min |
| Cavity-Tooling:          | 21A-4       |       |
| Installation torque:     | 40 - 50     | Nm    |
| Weight:                  | 0.176 (Z=L) | kg    |

- This valve is direct-acting structure and contamination proof.
- Input pressure up to 350 bar are available for all spring options.
- Back pressure at port ④ adds to the valve setting pressure which should be less than 350 bar.
- The maximum pressure at port ③ should be less than 210 bar.



### X OPERATION

**40** Standard Type

- Maximum Leakage Approximately (30 cc/min./70 bar)

### Y SPRINGS ADJUSTMENT RANGES

|          |   |
|----------|---|
| <b>A</b> | 35 - 210 bar (50 bar Standard Setting)  |
| <b>B</b> | 3.5 - 105 bar (14 bar Standard Setting) |
| <b>D</b> | 1.7 - 55 bar (14 bar Standard Setting)  |
| <b>E</b> | 1.7 - 28 bar (14 bar Standard Setting)  |
| <b>S</b> | 1.7 - 14 bar (7 bar Standard Setting)   |
| <b>W</b> | 50 - 315 bar (70 bar Standard Setting)  |

### Z OPTIONS

|          |  |  |
|----------|--|--|
| <b>L</b> | Leakproof hex. socket screw.                   |  |
| <b>C</b> | Stainless Steel Tamper Resistant Cover.        |  |
| <b>K</b> | Handknob with Lock Knob. (Order Code: 6ZAK001) |  |