

Ordering Code: **PD-22A-X-Y-Z**

Turn screw clockwise to **increase** pressure setting.

Control Option: Maximum extension from locating shoulder. (Z=L Control shown)

3/8"-24UNF-2A

14.27 Hex. (9/16 inch)  
Torque 9 - 10 Nm  
Apply CH (5JAA097)  
Plastic tamper resistant cover

ϕ25

28.57 Hex. (1-1/8 inch)

L=88  
K=94

Drain ④

Tank ③

1.0"-14UNS-2A

Inlet ②

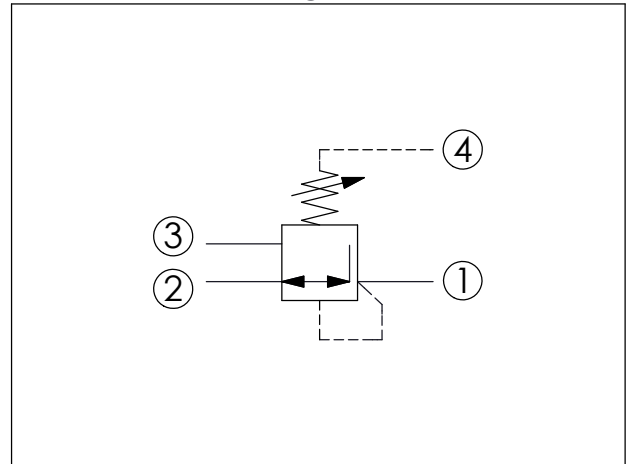
Reduced Pressure ①

35.12 (Ref.)

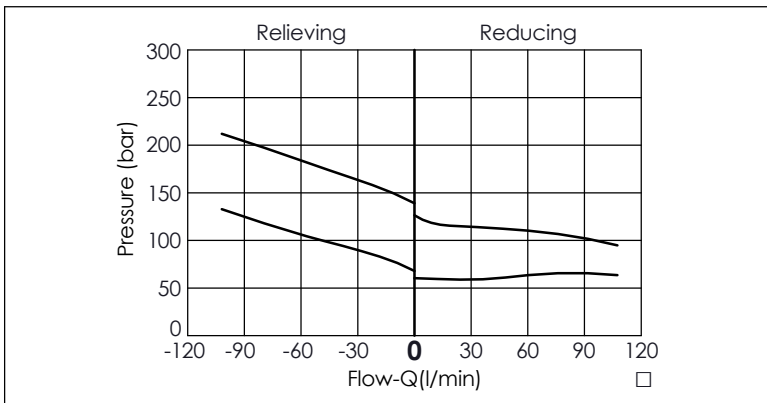
Locating Shoulder

UNIT:mm

Illustrations / detail are for reference only. Data subject to change.



TECHNICAL DATA	
Max. Operating pressure:	350 bar
Rated flow:	80 l/min
Cavity-Tooling:	22A-4
Installation torque:	60 - 70 Nm
Weight Approximately:	0.33 (Z=L) kg
<ul style="list-style-type: none"> <li>This valve is direct-acting structure and contamination proof.</li> <li>Input pressure up to 350 bar are available for all spring options.</li> <li>Back pressure at port ④ adds to the valve setting pressure which should be less than 350 bar.</li> <li>The maximum pressure at port ③ should be less than 210 bar.</li> </ul>	



X	OPERATION	
40	Standard Type	
<ul style="list-style-type: none"> <li>Maximum Leakage Approximately (50 cc/min./70 bar)</li> </ul>		

Y	SPRINGS	
	ADJUSTMENT RANGES	
A	50 - 210 bar	(70 bar Standard Setting)
B	20 - 105 bar	(35 bar Standard Setting)
D	14 - 55 bar	(28 bar Standard Setting)
E	7 - 28 bar	(14 bar Standard Setting)
S	3.5 - 14 bar	(7 bar Standard Setting)

Z	OPTIONS	
L	Leakproof hex. socket screw.	
C	Stainless Steel Tamper Resistant Cover.	
K	Handknob with Lock Knob. (Order Code: 6ZAK001)	