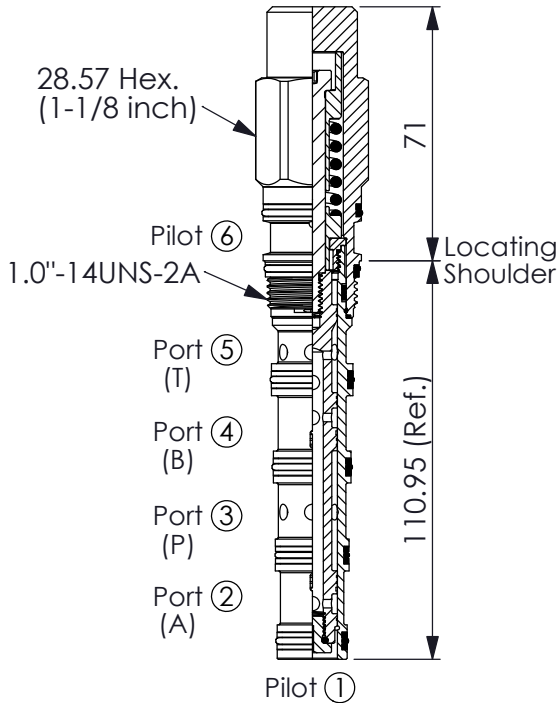


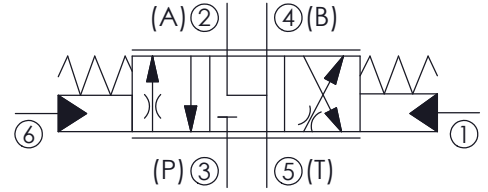
Ordering Code: **PDD-52A-X-Y-N-Z**



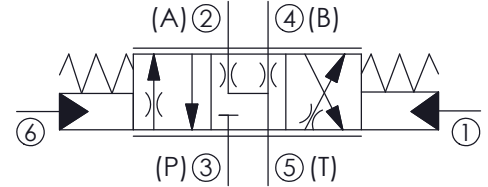
UNIT:mm

Illustrations / detail are for reference only. Data subject to change.

**Y=24**



**Y=25**



### TECHNICAL DATA

Max. Operating pressure: 350 bar

Rated flow: 28 l/min

Cavity-Tooling: 52A-6

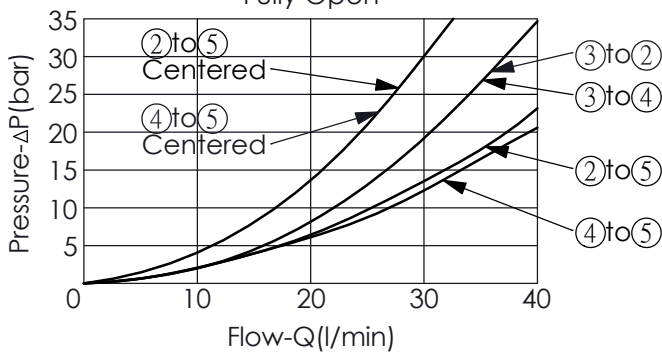
Installation torque: 60 - 70 Nm

Weight: 0.47 kg

- Minimum Pilot Pressure Required to Shift Valve: 4 - 9 bar.
- Pilot Pressure Required for Full Shift at Rated Flow: 20 - 23 bar.
- Nominal operating pressures for port (1) and port (6) should not exceed 35 bar.

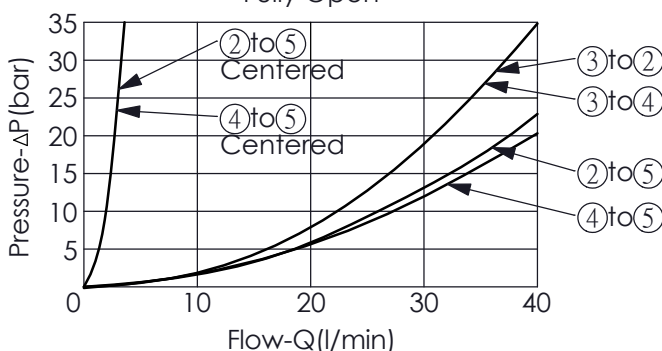
**Y=24**

Pressure Differential vs. Flow Fully Open



**Y=25**

Pressure Differential vs. Flow Fully Open



### X STRUCTURE

**6P** Ports (1) and (6) Pilot

- Maximum Leakage Approximately (30 cc/min./70 bar)

### Y OPERATION

**24** (2) and (4) to (5) Center

**25** (2) and (4) Bled to (5) Center

### Z OPTIONS

**028** 28 LPM