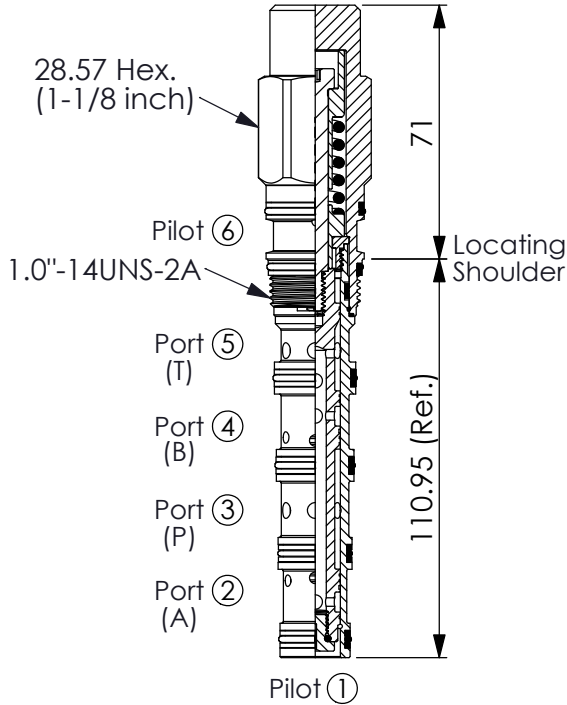


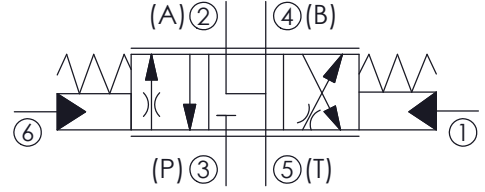
Ordering Code: **PDD-52A-X-Y-N-Z**



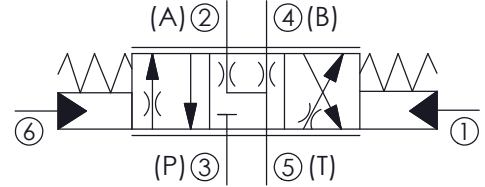
UNIT:mm

Illustrations / detail are for reference only. Data subject to change.

Y=24



Y=25



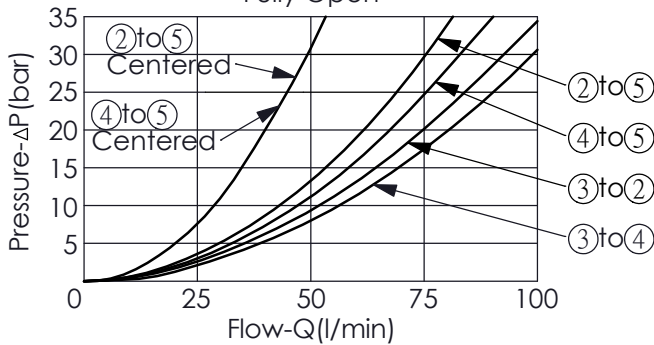
TECHNICAL DATA

Max. Operating pressure:	350	bar
Rated flow:	70	l/min
Cavity-Tooling:	52A-6	
Installation torque:	60 - 70	Nm
Weight:	0.47	kg

- Minimum Pilot Pressure Required to Shift Valve: 3.5 - 8 bar.
- Pilot Pressure Required for Full Shift at Rated Flow: 20 - 23 bar.
- Nominal operating pressures for port ① and port ⑥ should not exceed 35 bar.

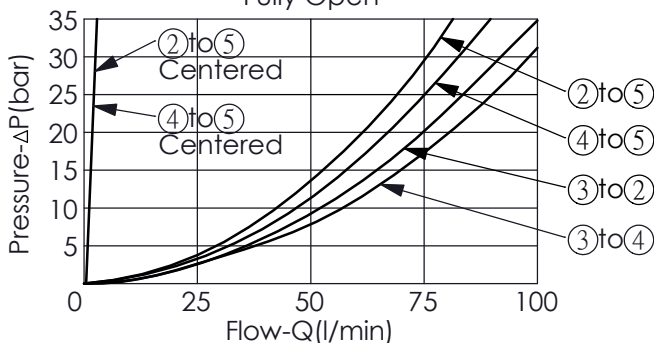
Y=24

Pressure Differential vs. Flow Fully Open



Y=25

Pressure Differential vs. Flow Fully Open



X

STRUCTURE

6P

Ports ① and ⑥ Pilot

- Maximum Leakage Approximately (30 cc/min./70 bar)

Y

OPERATION

24

② and ④ to ⑤ Center

25

② and ④ Bleed to ⑤ Center

Z

OPTIONS

070

70 LPM

070P

70 LPM,
With stainless steel
external metal components