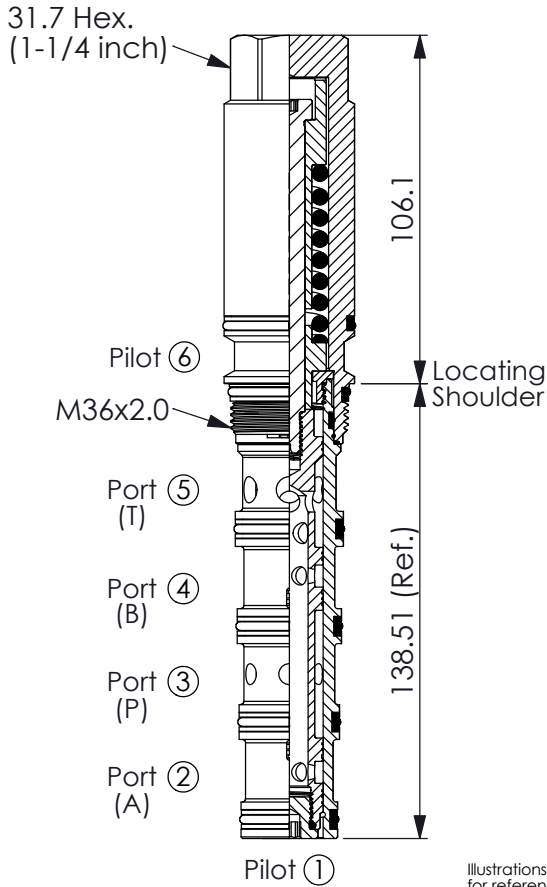


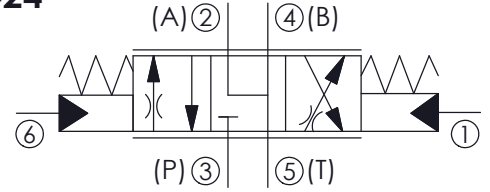
Ordering Code: **PDD-53A-X-Y-N-Z**



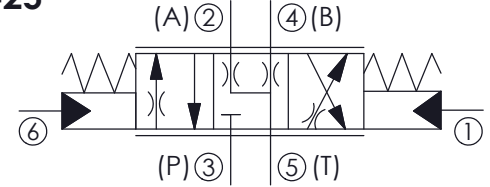
UNIT:mm

Illustrations / detail are for reference only. Data subject to change.

Y=24



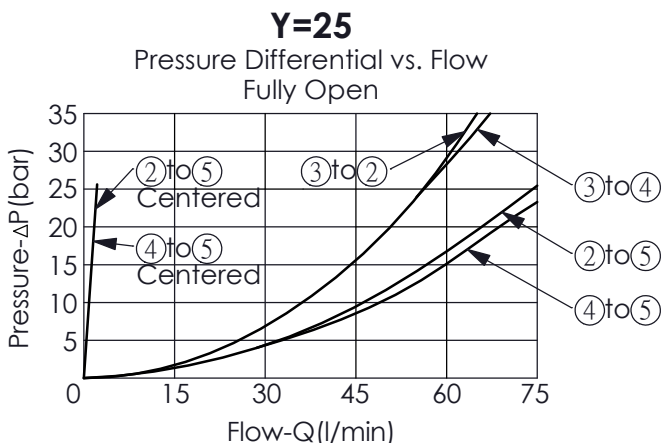
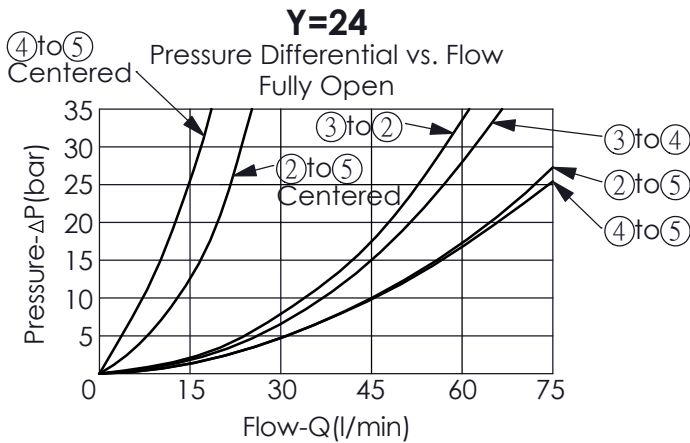
Y=25



TECHNICAL DATA

Max. Operating pressure:	350 bar
Rated flow:	45 l/min
Cavity-Tooling:	53A-6
Installation torque:	200 - 215 Nm
Weight:	1.32 kg

- Minimum Pilot Pressure Required to Shift Valve: 3.5 - 8 bar.
- Pilot Pressure Required for Full Shift at Rated Flow: 20 - 23 bar.
- Nominal operating pressures for port 1 and port 6 should not exceed 35 bar.



X STRUCTURE

6P Ports 1 and 6 Pilot

- Maximum Leakage Approximately (40 cc/min./70 bar)

Y OPERATION

24	2 and 4 to 5 Center
25	2 and 4 Bleed to 5 Center

Z OPTIONS

045 45 LPM