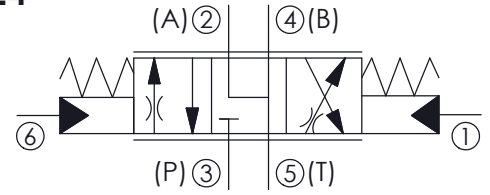
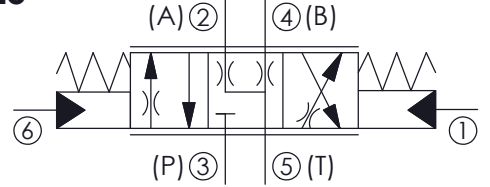


Y=24



Y=25



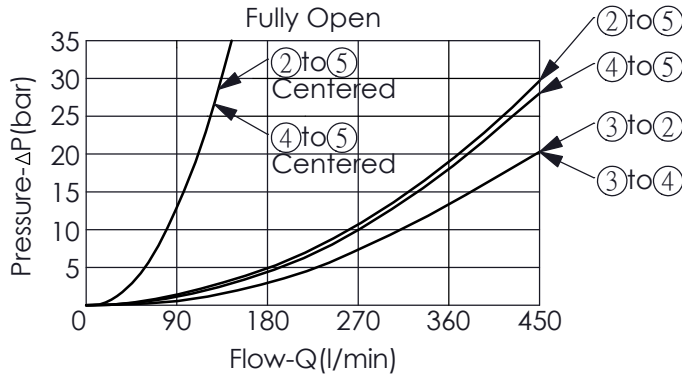
TECHNICAL DATA

Max. pressure:	350	bar
Rated flow:	320	l/min
Cavity-Tooling:	54A-6	
Installation torque:	465 - 500	Nm
Weight:	2.49	kg

- Minimum Pilot Pressure Required to Shift Valve: 3.5 - 8 bar
- Pilot Pressure Required for Full Shift at Rated Flow: 25 bar
- Nominal operating pressures for port ① and port ⑥ should not exceed 35 bar.

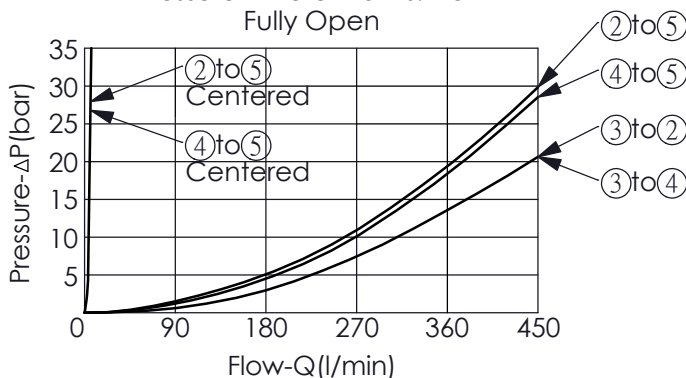
Y=24

Pressure Differential vs. Flow Fully Open



Y=25

Pressure Differential vs. Flow Fully Open



X

STRUCTURE

6P

Ports ① and ⑥ Pilot

- Maximum Leakage Approximately (50 cc/min./70 bar)

Y

OPERATION

24

② and ④ to ⑤ Center

25

② and ④ Bleed to ⑤ Center

Z

OPTIONS

320

320 LPM