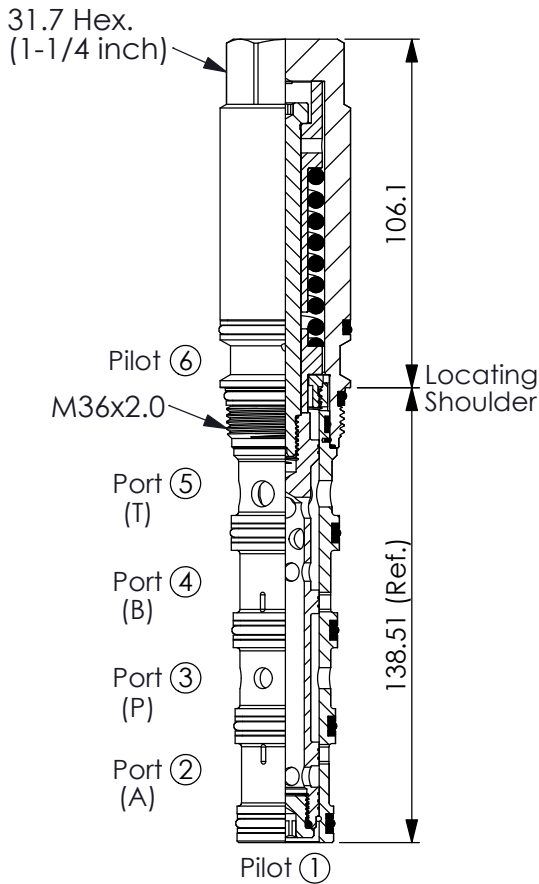
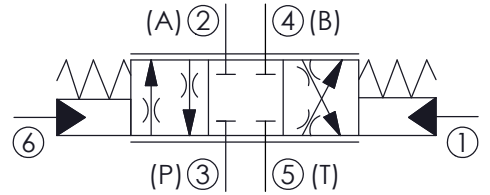


Ordering Code: **PDD-53A-X-Y-N-Z**



UNIT:mm



### TECHNICAL DATA

Max.Operating pressure: 350 bar

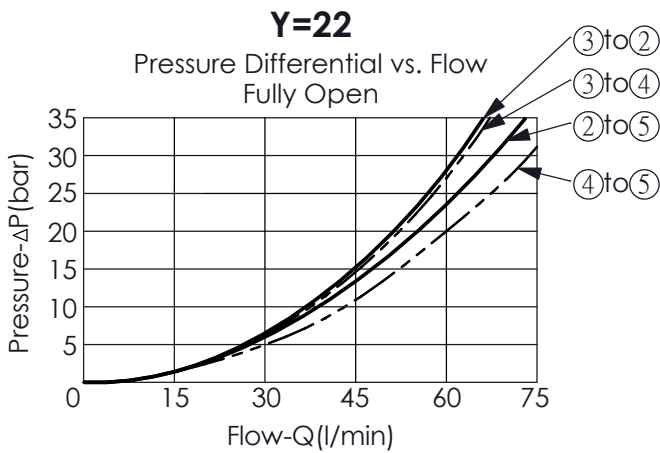
Rated flow: 45 l/min

Cavity-Tooling: 53A-6

Installation torque: 200-215 Nm

Weight: 1.303 kg

- Minimum Pilot Pressure Required to Shift Valve: 3.5 - 8 bar.
- Pilot Pressure Required for Full Shift at Rated Flow: 20 - 23 bar.
- Nominal operating pressures for port ① and port ⑥ should not exceed 35 bar.



### X STRUCTURE

**6P** Ports ① and Ports ⑥ Pilot

- Maximum Leakage Approximately (40 cc/min./70 bar)

### Y OPERATION

**22** Spool 4-Ways, 3-Positions, Blocked Centre

### Z OPTIONS

**045** 45 LPM