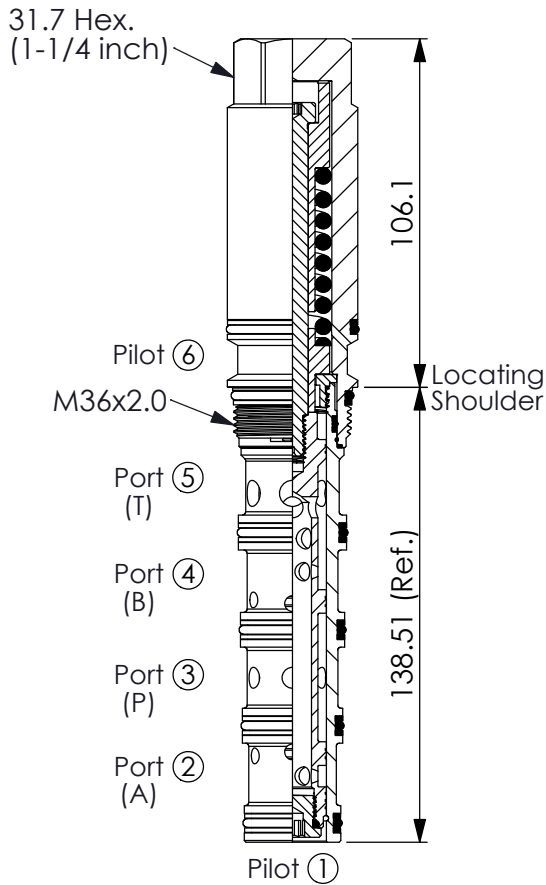
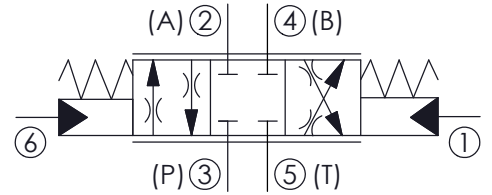


Ordering Code: **PDD-53A-X-Y-N-Z**



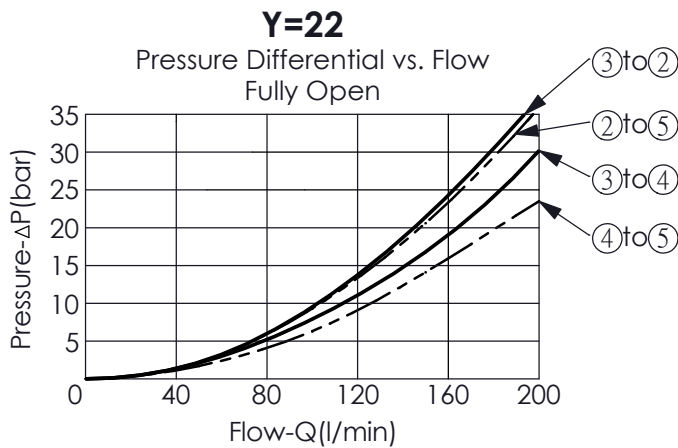
UNIT:mm



TECHNICAL DATA

Max.Operating pressure:	350	bar
Rated flow:	140	l/min
Cavity-Tooling:	53A-6	
Installation torque:	200-215	Nm
Weight:	1.31	kg

- Minimum Pilot Pressure Required to Shift Valve: 3.5 - 8 bar.
- Pilot Pressure Required for Full Shift at Rated Flow: 20 - 23 bar.
- Nominal operating pressures for port ① and port ⑥ should not exceed 35 bar.



X	STRUCTURE	
6P	Ports ① and Ports ⑥ Pilot	
	• Maximum Leakage Approximately (40 cc/min./70 bar)	

Y	OPERATION	
22	Spool 4-Ways, 3-Positions, Blocked Centre	

Z	OPTIONS	
140	140 LPM	