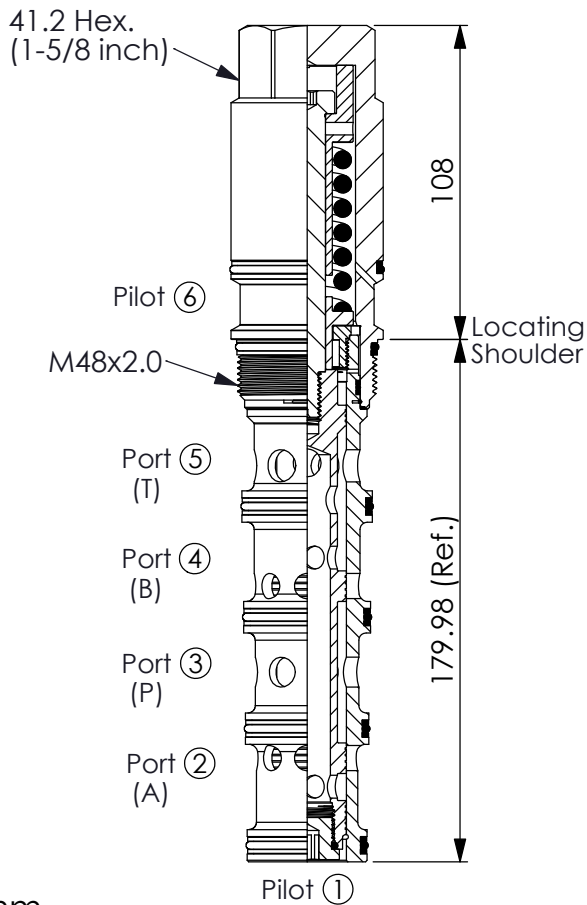
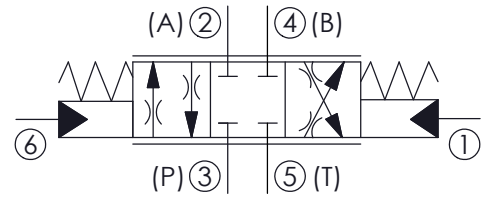


Ordering Code: **PDD-54A-X-Y-N-Z**



UNIT:mm



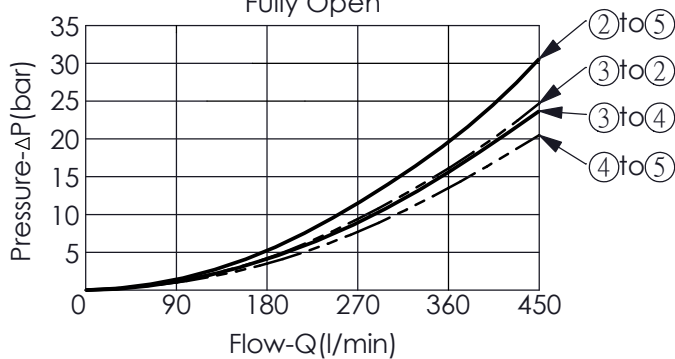
### TECHNICAL DATA

Max.Operating pressure:	350	bar
Rated flow:	320	l/min
Cavity-Tooling:	54A-6	
Installation torque:	465-500	Nm
Weight:	2.466	kg

- Minimum Pilot Pressure Required to Shift Valve: 3.5 - 8 bar.
- Pilot Pressure Required for Full Shift at Rated Flow: 25 bar.
- Nominal operating pressures for port ① and port ⑥ should not exceed 35 bar.

### Y=22

Pressure Differential vs. Flow Fully Open



### X STRUCTURE

**6P** Ports ① and Ports ⑥ Pilot

- Maximum Leakage Approximately (50 cc/min./70 bar)

### Y OPERATION

**22** Spool 4-Ways, 3-Positions, Blocked Centre

### Z OPTIONS

**320** 320 LPM