

FLOW CONTROL VALVE (Electro-Proportional, Normally Closed With Cable)

Ordering Code: **PEP-08W-2A-X-Y-Z**

Please note the pull force and without crooked direction. If you have any question, please contact Winner's sales department.

Dimensions (mm):

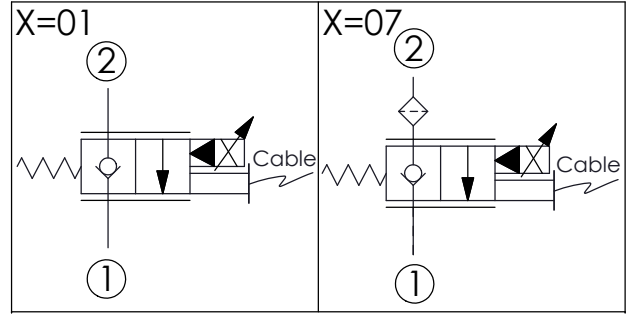
- Total height: 101
- Coil height: 80
- Coil to hex: 64
- Coil to shoulder: 62
- Shoulder to bottom: 27.7
- Bottom diameter: $\phi 12.7$
- Top diameter: $\phi 34$

Options:

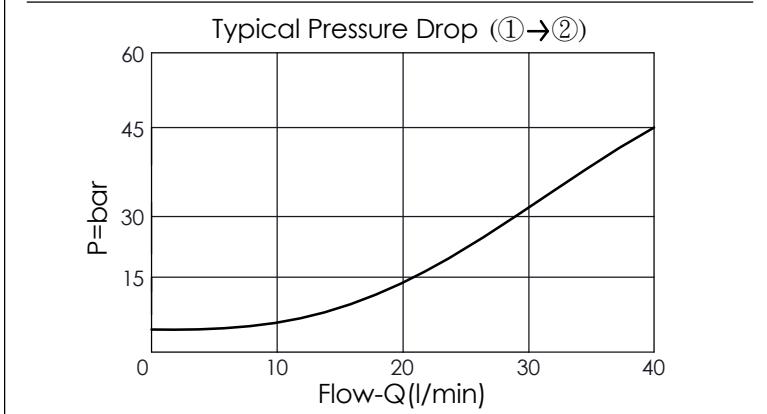
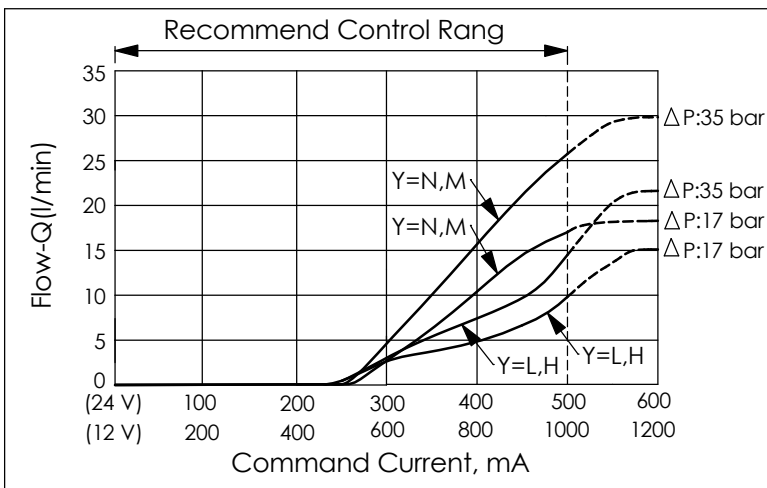
- Y=L Option, Y=H Option, M8x1.25
- Torque 2 - 3 Nm
- Coil EC-04W
- 22.22 Hex. (7/8 inch)
- 3/4"-16UNF-2A

UNIT:mm

Illustrations / detail are for reference only. Data subject to change.



| TECHNICAL DATA | | |
|---|-----------|----------|
| Max. Operating pressure: | 250 | bar |
| Rated flow: | 22 | l/min |
| Cavity-Tooling: | 08W-2 | |
| Installation torque: | 25 - 35 | Nm |
| Weight:(with Coil) | 0.37 | kg |
| (without Coil) | 0.15 | kg |
| Coils must be ordered separately | | |
| Internal Leakage Approximately: 0.15 cc/minute (5 drops/minute) max. at 250 bar | | |
| Continuous Duty Coils: Current(A) | | |
| Voltage(V) | Cold Coil | Hot Coil |
| 12 | 1.66 | 1.06 |
| 24 | 0.88 | 0.53 |



| X | STRUCTURE | |
|--|---|---------------------------|
| 01 | Normally-Closed | No Reverse Flow Energized |
| 07 | Normally-Closed With Filter | No Reverse Flow Energized |
| Y | OPTIONS | |
| N | Non-adjustable | |
| M | Manual Override | |
| L | Pull Style (Cable Operated) (M8x1.25) | |
| H | Pull Style (Hand Operated) (Suitable for M8x1.25) | |
| · If there are requirements other than thread of Y=L or Y=H, please contact the Winner sales department. | | |

| Z | FLOW | |
|------------------|--------|-----|
| NOMINAL CAPACITY | | |
| 0220 | 0 - 22 | LPM |