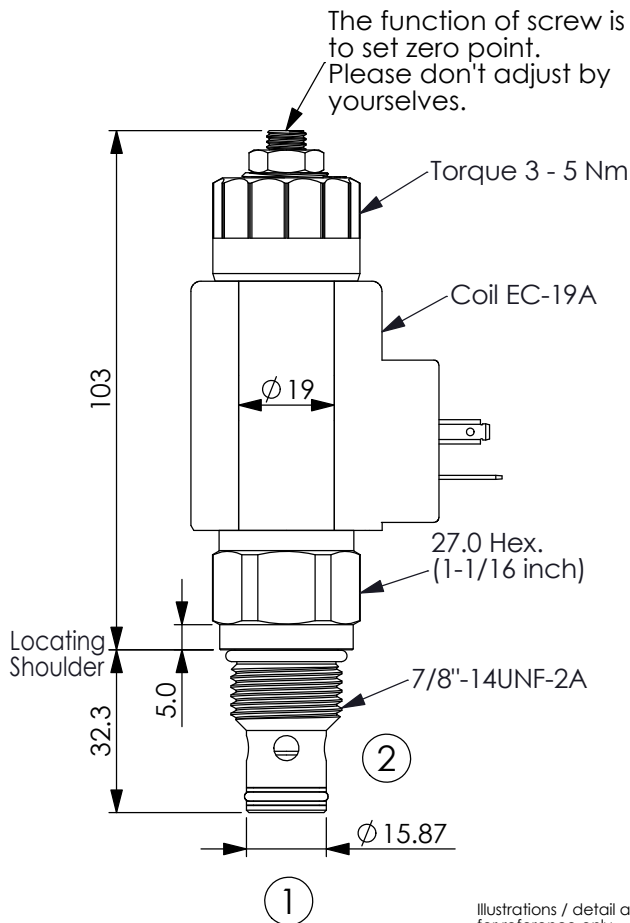


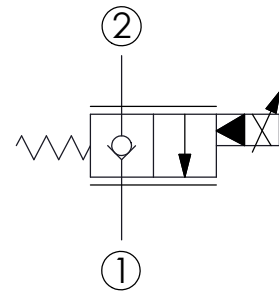
FLOW CONTROL VALVE (Electro-Proportional, Normally Closed)

Ordering Code: **PEP-10W-X-Y-N-Z**



UNIT:mm

Illustrations / detail are for reference only. Data subject to change.



TECHNICAL DATA

Max. Operating pressure: 260 bar

Rated flow: 55 l/min
(Refer To Performance Chart)

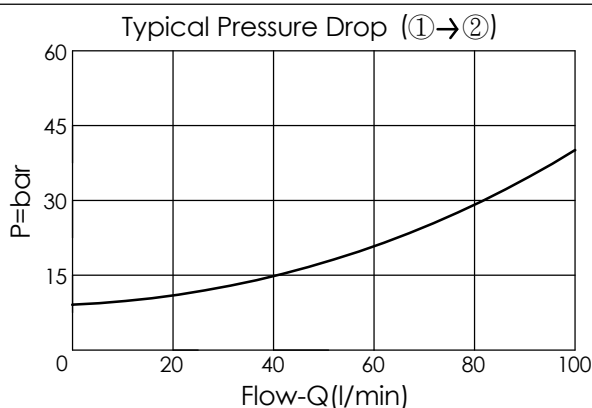
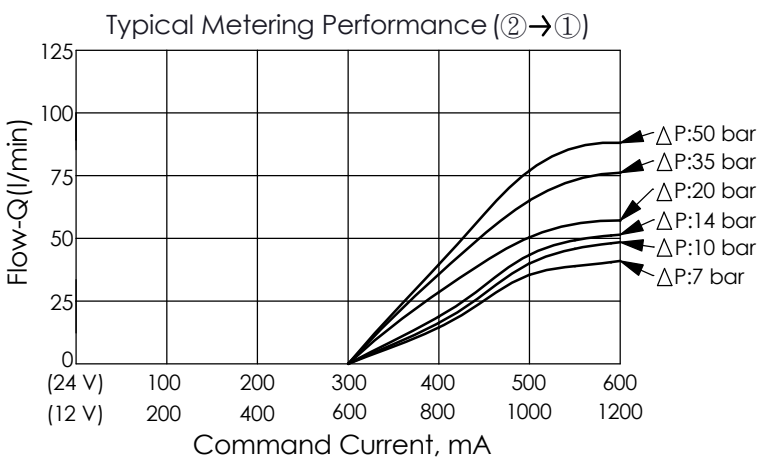
Cavity-Tooling: 10W-2

Installation torque: 35 - 45 Nm

Weight:(with Coil) 0.54 kg
(without Coil) 0.30 kg

Coils must be ordered separately

(5 drops/minute) max.at 260 bar



X	STRUCTURE
2D	2 Ports · 22 Watt. Coil Ø 19 mm tube

Y	OPERATION
01	Normally-Closed No Reverse Flow Energized

Z	FLOW
	NOMINAL CAPACITY
0550	0 - 55 LPM